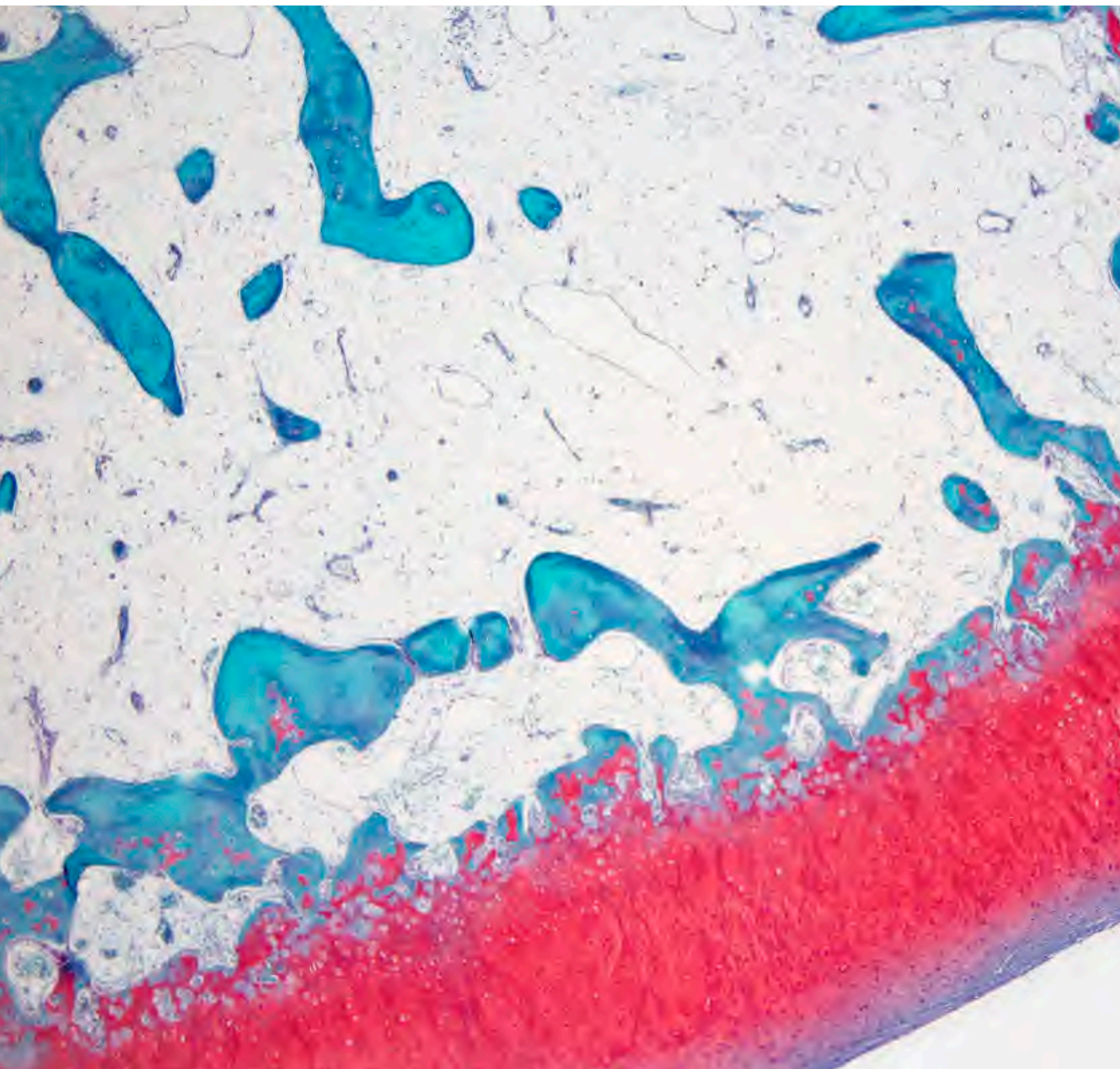


STAIN KITS



newcomer  SUPPLY®

ABOUT US & ORDERING INFORMATION

Mission

Keeping it real: Our job is to help you get your job done. Everything we do is designed with your needs in mind. Our goal is to make sure your goals are met.

Keeping the lines of communication open: Our technical support staff is ready to help you solve problems, resolve concerns, and make sure that your procedures run as smoothly as possible.

Keeping prices competitive: We take pride in making sure our products arrive at your lab with the fairest price possible.

Keeping a sense of humor: Life is Good! Don't forget that. We won't. If you're having a bad day, don't worry, it's our joy to make sure your day is full of *HISTOCALIFRAGILISTICEXPIALIDOCIOUS!*

PLACING AN ORDER

To place an order contact customer service at your earliest convenience by phone, fax, mail, or email. Our experienced staff is available and ready to help you find the histology laboratory products you need. To see our current product listings, please visit our website.

Phone 1-800-383-7799 Monday through Friday
8 a.m. to 5 p.m. CST

Fax 1-608-831-0866

Email orders@newcomersupply.com

Mail Newcomer Supply Inc.
Attn: Customer Service
1020 Prairie View Ct
Waunakee, WI 53597-8512

Website www.newcomersupply.com

"There are two ways to live your life. One is as though nothing is a miracle. The other is as though everything is a miracle." -Albert Einstein

We work hard to bring you the best histology supply services available. Please call 800-383-7799 or e-mail info@newcomersupply.com with any questions or comments. For technical concerns, contact tech@newcomersupply.com



ABOUT OUR STAIN KITS & TABLE OF CONTENTS

USAGE

All Newcomer Supply Stain Kits are designed to be used with Coplin jars filled to 40ml. Follow the staining procedure provided in the kit, some solutions may contain extra volumes.

PROCEDURE

All stain kits will include a Technical Memo and SDS. The Technical Memo includes information on: application, method, staining procedure, results, procedure notes and references. Technical Memos and SDSs can also be found on our website.

CONTROL SLIDES

Most Newcomer stain kits come with two complimentary unstained positive control slides to be used for the initial verification of staining techniques and reagents. Verification must be documented by running one Newcomer Supply complimentary positive control

slide along with your current positive control slide for the first run. Retain the second complimentary control slide for further troubleshooting, if needed.

STORAGE

For storage requirements and expiration date, refer to individual bottle labels.

COMPONENTS

Components for many of our stain kits are available for purchase individually.

KEY

H = Hazardous chemical shipping requirements and air shipment Hazardous Material Fee.

CARBOHYDRATE STAINS

Alcian Blue 1%, pH 2.5	3
Alcian Blue/PAS	4
Colloidal Iron, Müller-Mowry	5
Mucin, Mayer Mucicarmine	8
Periodic Acid Schiff (PAS)	9

CONNECTIVE TISSUE AND MUSCLE FIBER STAINS

Elastic, Verhoeff	5
Jones Basement Membrane	8
Movat-Russell Modified Pentachrome	8
Phosphotungstic Acid Hematoxylin (PTAH)	9
Reticulum, Gordon & Sweets	9
Trichrome, Gomori One-Step, Aniline Blue	10
Trichrome, Gomori One-Step, Fast Green	10
Trichrome, Masson, Aniline Blue	11
Trichrome, Masson, Fast Green	11
Trichrome, McLetchie, Aniline Blue	11

FAT STAIN

Oil Red O	9
-----------------	---

MICROORGANISM STAINS

AFB, Basic Fuchsin, Ellis & Zabrowarny	3
AFB, Fite	3
AFB, Ziehl-Neelsen	3
Differential	5
Fungus, Grocott Methenamine Silver (GMS)	6
Fungus, PAS/Light Green	6
Gram, Brown-Brenn Modified	6
Gram, Brown-Hopps	7
Gram, Hucker-Twort	7
Helicobacter Pylori	7
Steiner-Chapman Modified Silver	10
Steiner-Steiner Modified Silver	10

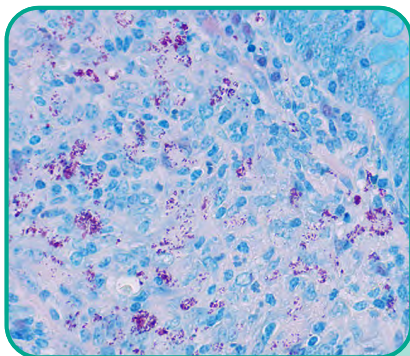
NEUROLOGICAL STAINS

Bielschowsky, Lester-King Modified	4
Luxol Fast Blue (LFB) - Cresyl Violet	8

PIGMENT, SUBSTANCE AND MINERAL STAINS

Amyloid, Bennhold Congo Red	4
Amyloid, Puchtler Congo Red	4
Copper, Rhodanine	5
Fontana Masson	6
Iron, Gomori Prussian Blue	7

STAIN KITS

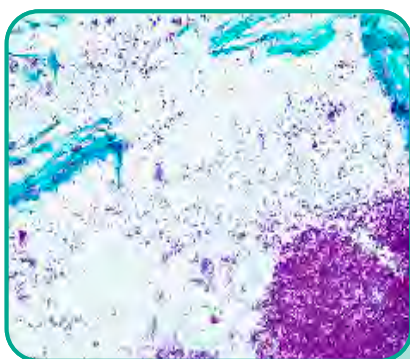


AFB, Basic Fuchsin, Ellis & Zabrowarny Stain Kit

Stains acid-fast bacilli without the use of phenol. A surfactant substitution is made for phenol which renders the bacterial cell wall permeable to the stain. Results are comparable to the traditional Ziehl-Neelsen method.

Microwave Modification Included

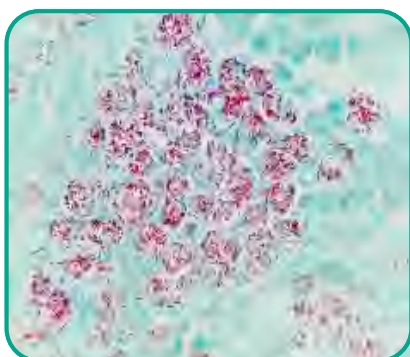
PART	VOLUME	
91012A	250ml	H



AFB, Fite Stain Kit

Detects the presence of either Nocardia sp. or Mycobacterium leprae sp. (causative agent of leprosy) in tissue sections.

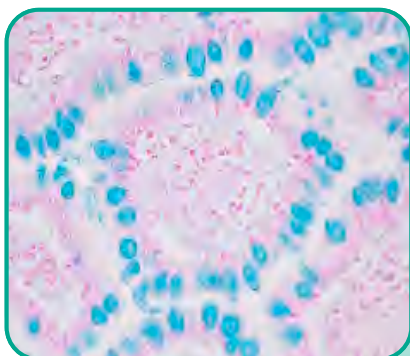
PART	VOLUME	
91013A	250ml	H



AFB, Ziehl-Neelsen Stain Kit

Detects the presence of acid-fast mycobacteria in tissue sections. Carbol Fuchsin Stain, Ziehl-Neelsen, combines phenol and basic fuchsin that works to permeate the lipid capsule of acid-fast organisms and renders them resistant to acid alcohol decolorization.

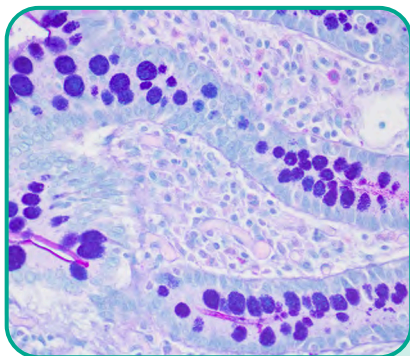
PART	VOLUME	
9101A	250ml	H



Alcian Blue 1%, pH 2.5 Stain Kit

Stains acid epithelial mucin (sialomucin, sulfomucin) as well as stromal (mesenchymal) mucin. Hyaluronidase digestion step can be employed for further differentiation of acid epithelial from stromal mucin.

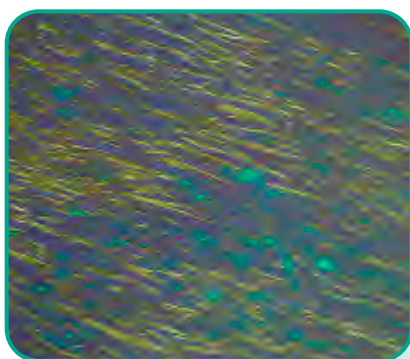
PART	VOLUME
9102A	250ml
9102B	500ml



Alcian Blue/PAS Stain Kit

Differentiates between acidic epithelial mucins (sialomucin, sulfomucin) and neutral epithelial mucin and is a means of detecting the overall presence of mucins. Acidic mucins are stained with the Alcian Blue technique while neutral mucins and glycogen are stained by the PAS reaction.

PART	VOLUME
91022A	250ml
91022B	500ml



Amyloid, Bennhold Congo Red Stain Kit

Identifies the extraneous protein deposits in amyloidosis. The use of polarizing lenses is the essential technique for visualizing amyloid positive areas and/or to confirm negativity.

PART	VOLUME	
9103A	250ml	H

Microwave Modification Included



Amyloid, Puchtler Congo Red Stain Kit

Identifies the extraneous protein deposits in amyloidosis. The use of polarizing lenses is the essential technique for visualizing amyloid positive areas and/or to confirm negativity.

PART	VOLUME	
9104A	250ml	H

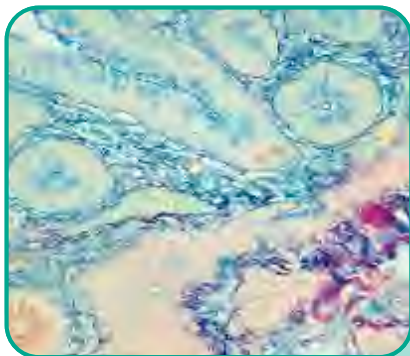


Bielschowsky, Lester-King Modified Stain Kit

Stains nerve fibers, neurofibrils/tangles, senile plaques and axons. Used in the diagnosis of Alzheimer's disease and other neurological disorders.

PART	VOLUME	
9154A	250ml	H

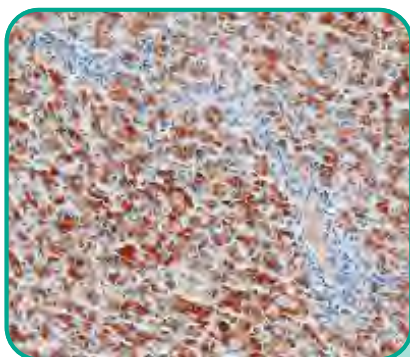
STAIN KITS



Colloidal Iron, Müller-Mowry Stain Kit

Stains acid epithelial mucin (sialomucin, sulfomucin) and stromal (mesenchymal) mucin and also demonstrates encapsulated yeast *Cryptococcus neoformans*.

PART	VOLUME	
9110A	250ml	H

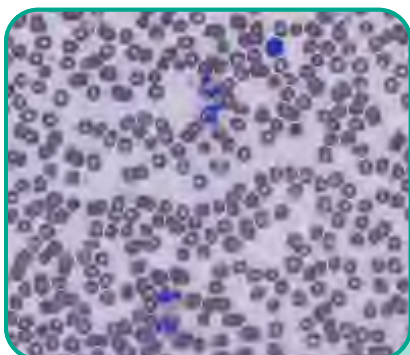


Copper, Rhodanine Stain Kit

Used for the detection of copper and copper-associated protein (CAP) in tissue sections.

PART	VOLUME	
9113A	250ml	H

Microwave Modification Included

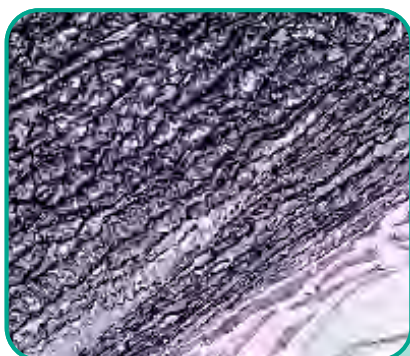


Differential Stain Kit

Differential staining of peripheral blood smears, touch imprints, fine needle aspirations (FNA), bone marrow biopsy aspirations, as well as detecting *Helicobacter pylori* sp. in GI tissue. Can be used for smears, touch imprints and tissue sections. This is a modification of the Wright Giemsa Stain technique using aqueous based stain solutions and a methanol fixative. Procedures for both monochromatic and polychromatic versions of the Differential Stain are provided. Shelf Life: 2 years.

PART	VOLUME	
9112B	500ml	H

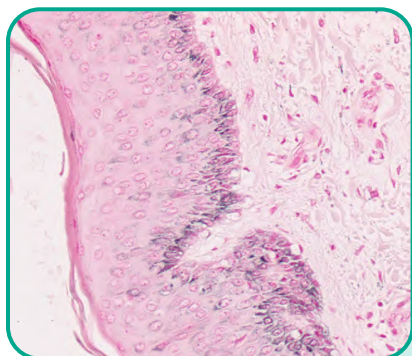
Complimentary Control Slides Not Included



Elastic, Verhoeff Stain Kit

Used to demonstrate pathologic changes in elastic fibers as well as demonstration of normal elastic tissue such as arteries and veins.

PART	VOLUME	
9116A	250ml	H
9116B	500ml	H



Fontana Masson Stain Kit

Stains argentaftin substances such as melanin, argentaftin granules of carcinoid tumors, and some neurosecretory granules.

PART	VOLUME	
9105A	250ml	H

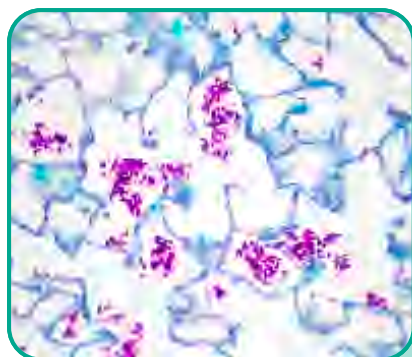


Fungus, Grocott Methenamine Silver (GMS) Stain Kit

Stains a variety of fungal organisms including: Pneumocystis carinii, Aspergillus, Blastomyces, Candida and Histoplasma.

PART	VOLUME	
9121A	250ml	H
9121B	500ml	H

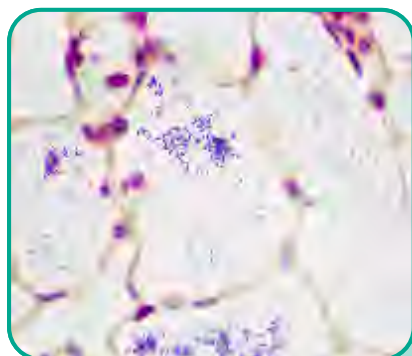
Microwave Modification Included



Fungus, PAS/Light Green Stain Kit

Stains fungus and glycoproteins. Polysaccharides present in fungal cell walls are oxidized by the periodic acid to aldehydes. The aldehydes then react with Schiff Reagent, McManus to yield magenta colored fungi.

PART	VOLUME	
9122A	250ml	

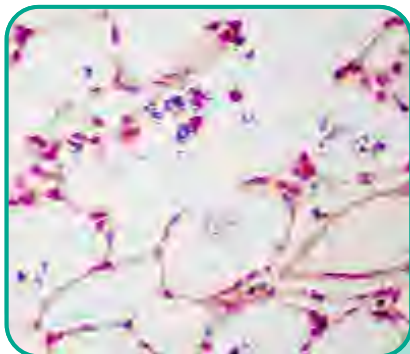


Gram, Brown-Brenn Modified Stain Kit

Used for differential staining of gram-positive and gram-negative bacteria in tissue sections, cultures and smears.

PART	VOLUME	
9123A	250ml	H

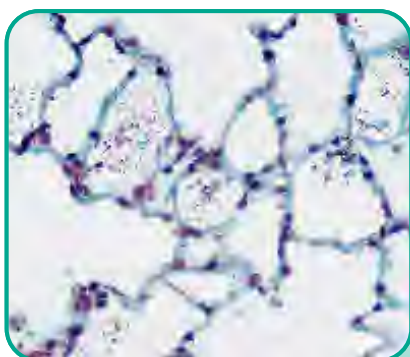
STAIN KITS



Gram, Brown-Hopps Stain Kit

Stains gram-negative and gram-positive bacteria and uses Gallego solution to differentiate the organisms.

PART	VOLUME
9124A	250ml H



Gram, Hucker-Twort Stain Kit

Stains gram-positive and gram-negative bacteria without the use of picric acid. The Fast Green secondary counterstain provides the green background for clear detection of any red gram-negative bacteria present. Shelf Life: 2 years.

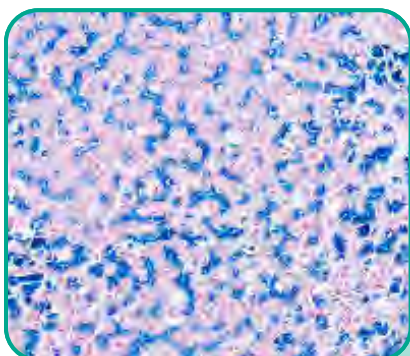
PART	VOLUME
9125A	250ml H



Helicobacter Pylori Stain Kit

Used to screen and detect Helicobacter pylori in gastrointestinal biopsy specimens.

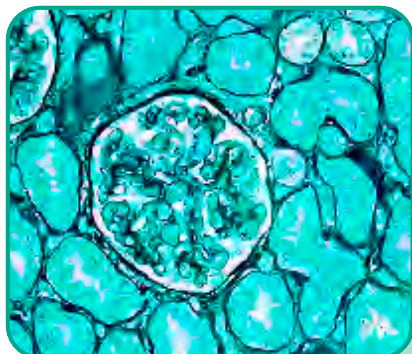
PART	VOLUME
9130A	250ml H



Iron, Gomori Prussian Blue Stain Kit

Used to detect loosely bound ferric iron in tissue sections. This histochemical reaction is sensitive enough to demonstrate minute amounts of iron deposits in blood cells, bone marrow and spleen.

PART	VOLUME
9136A	250ml H
9136B	500ml H

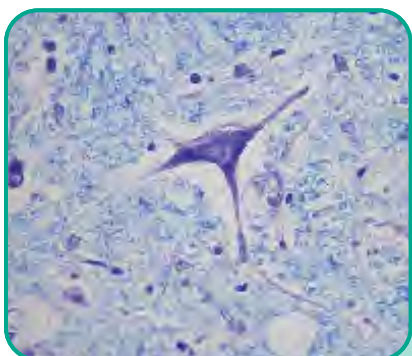


Jones Basement Membrane Stain Kit

A straightforward silver technique for identification of glomerular and tubular basement membranes in renal tissue.

PART	VOLUME
9167A	250ml

Microwave Modification Included

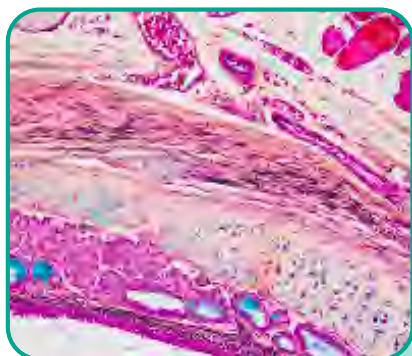


Luxol Fast Blue (LFB) - Cresyl Violet Stain Kit

Stains myelin and Nissl substance in central nervous system tissues and in peripheral nerve.

PART	VOLUME	
9155A	250ml	H

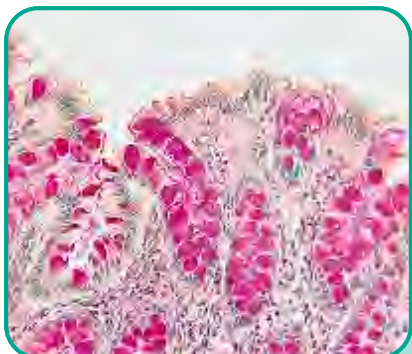
Microwave Modification Included



Movat-Russell Modified Pentachrome Stain Kit

Stains five connective tissue elements; mucin, fibrin, elastic fibers, muscle, and collagen, along with nuclei.

PART	VOLUME	
9150A	250ml	H



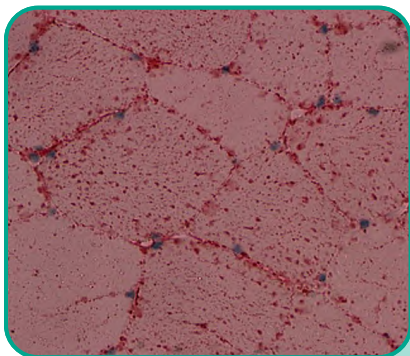
Mucin, Mayer Mucicarmine Stain Kit

Stains acid epithelial mucin (sialomucin, sulfomucin) and is also useful for the demonstration of the encapsulated yeast *Cryptococcus neoformans*.

PART	VOLUME	
9151A	250ml	H
9151B	500ml	H

Microwave Modification Included

STAIN KITS

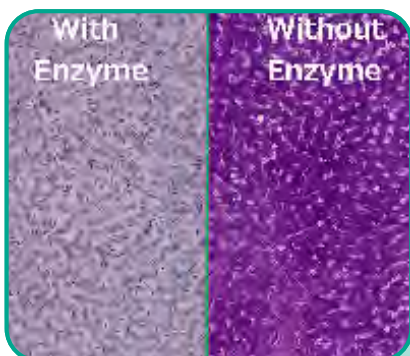


Oil Red O Stain Kit

Used for identification of fat/lipid in frozen sections.

PART	VOLUME
9119A	250ml

Complimentary Control Slides Not Included

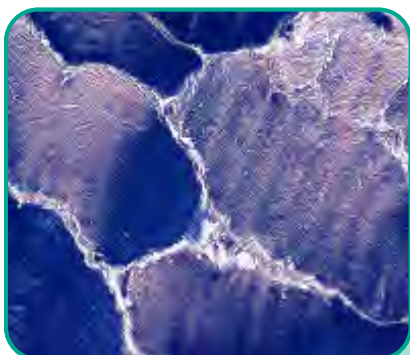


Periodic Acid Schiff (PAS) Stain Kit

Stains glycoproteins and aids in the differential diagnosis of tumors through the detection of acid/neutral epithelial mucins and/or glycogen. Digestion steps can be employed for further identification of mucosubstances. Also useful for staining basement membranes and fungal cell walls.

Microwave Modification Included

PART	VOLUME	
9162A	250ml	H
9162B	500ml	H

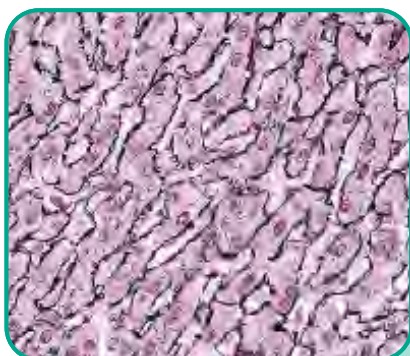


Phosphotungstic Acid Hematoxylin (PTAH) Stain Kit

Used for the demonstration of collagen, muscle striations and central nervous system (CNS) structures. The Zenker fixative used in this procedure is modified with zinc chloride and is mercury free.

Microwave Modification Included

PART	VOLUME	
9111A	250ml	H



Reticulum, Gordon & Sweets Stain Kit

A silver stain for demonstration of reticular fibers. Useful in the differential diagnosis of certain types of tumors.

PART	VOLUME	
9168A	250ml	H

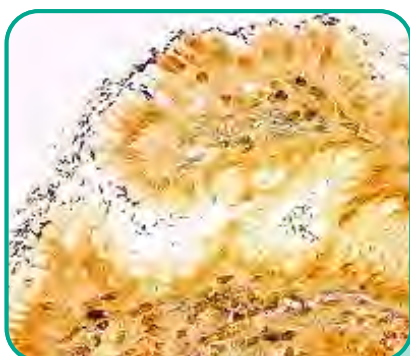


Steiner-Chapman Modified Silver Stain Kit

Stains spirochetes, *Helicobacter pylori*, *Legionella pneumophila*, other nonfilamentous bacteria and fungus. Eliminates the use of Uranyl Nitrate.

PART	VOLUME	
9172A	250ml	H
9172B	500ml	H

Microwave Modification Included

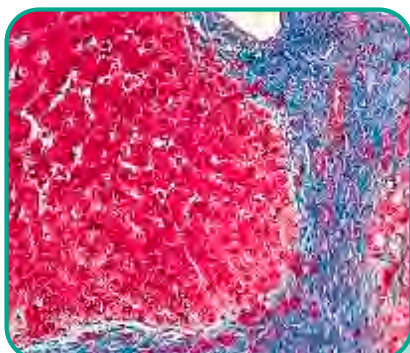


Steiner-Steiner Modified Silver Stain Kit

A silver stain for identifying spirochetes, *Helicobacter pylori*, *Legionella pneumophila*, other nonfilamentous bacteria and fungus.

PART	VOLUME	
9171A	250ml	H

Microwave Modification Included

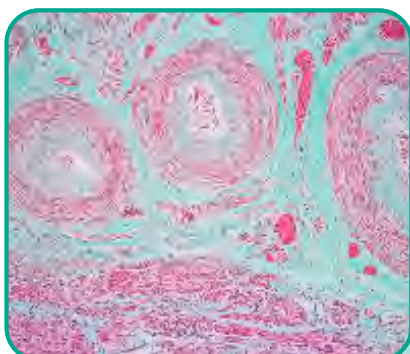


Trichrome, Gomori One-Step, Aniline Blue Stain Kit

Uses a one-step solution combining a plasma stain and a connective tissue stain to differentially demonstrate collagen and muscle fibers.

PART	VOLUME	
9176B	250ml	H
9176A	500ml	H

Microwave Modification Included



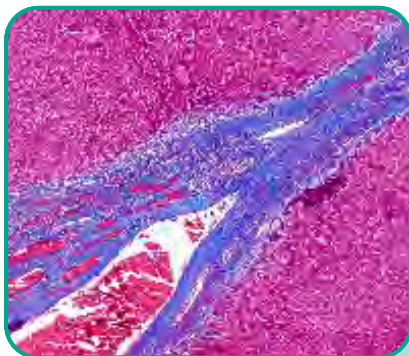
Trichrome, Gomori One-Step, Fast Green Stain Kit

Uses a one-step solution combining a plasma stain and a connective tissue stain to differentially demonstrate collagen and muscle fibers.

PART	VOLUME	
9175A	250ml	H

Microwave Modification Included

STAIN KITS

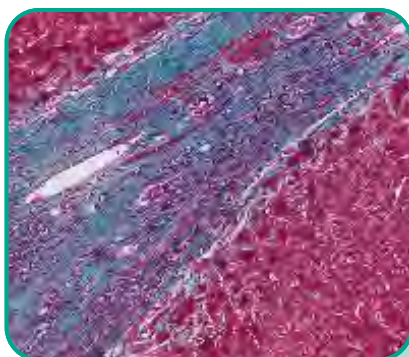


Trichrome, Masson, Aniline Blue Stain Kit

Used to differentially demonstrate connective tissue elements, collagen and muscle fibers.

PART	VOLUME	
9179A	250ml	H
9179B	500ml	H

Microwave Modification Included

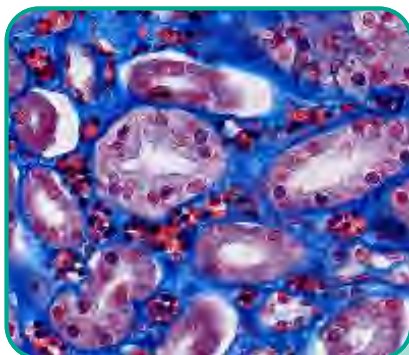


Trichrome, Masson, Fast Green Stain Kit

Used to differentially demonstrate connective tissue elements, collagen and muscle fibers.

PART	VOLUME	
9180A	250ml	H

Microwave Modification Included



Trichrome, McLetchie, Aniline Blue Stain Kit

Stains collagen and muscle fibers, works well on bone marrow and renal biopsies and provides time efficient results. This modified procedure does not use a Bouin Fluid mordant or a hematoxylin nuclear stain.

PART	VOLUME	
9177A	250ml	H

AFB, BASIC FUCHSIN, ELLIS & ZABROWARNY STAIN KIT

Basic Fuchsin Stain 1%, Alcoholic
Acid Alcohol 3%
Methylene Blue Stain 0.25%, Aqueous

AFB, FITE STAIN KIT

Xylene/Peanut Oil, 2:1
Carbol Fuchsin Stain, Ziehl-Neelsen
Acid Alcohol 1%
Light Green SF Yellowish Stain 0.1%, Aqueous

AFB, ZIEHL-NEELEN STAIN KIT

Carbol Fuchsin Stain, Ziehl-Neelsen
Acid Alcohol 1%
Light Green SF Yellowish Stain 0.1%, Aqueous

ALCIAN BLUE 1%, PH 2.5 STAIN KIT

Acetic Acid 3%, Aqueous
Alcian Blue Stain 1%, pH 2.5 Aqueous
Nuclear Fast Red Stain, Kernechtrot

ALCIAN BLUE/PAS STAIN KIT

Acetic Acid 3%, Aqueous
Alcian Blue Stain 1%, pH 2.5 Aqueous
Periodic Acid 0.5%, Aqueous
Schiff Reagent, McManus
Hematoxylin Stain, Mayer Modified

AMYLOID, BENNHOLD CONGO RED STAIN KIT

Congo Red Stain 1%, Aqueous
Alkaline Alcohol
Hematoxylin Stain, Mayer Modified

AMYLOID, PUCHTLER CONGO RED STAIN KIT

Hematoxylin Stain, Harris Modified
Sodium Hydroxide 1%, Aqueous
Congo Red Stain, Alcoholic

BIELSCHOWSKY, LESTER-KING MODIFIED STAIN KIT

Silver Nitrate 20%, Aqueous
Ammonium Hydroxide 28-30%, ACS
Developer
Sodium Thiosulfate 5%, Aqueous

COLLOIDAL IRON, MÜLLER-MOWRY STAIN KIT

Acetic Acid 12%, Aqueous
Colloidal Iron Stock
Acetic Acid, Glacial, ACS
Potassium Ferrocyanide 2%, Aqueous
Hydrochloric Acid 2%, Aqueous
Van Gieson Stain

COPPER, RHODANINE STAIN KIT

Rhodanine Stock Stain 0.2%, Alcoholic
Hematoxylin Stain, Mayer Modified
Sodium Borate 0.5%, Aqueous

DIFFERENTIAL STAIN KIT

Xanthene Stain
Thiazine Stain
Fixative

ELASTIC, VERHOEFF STAIN KIT

Hematoxylin 5%, Alcoholic
Ferric Chloride 10%, Aqueous
Iodine, Lugol's, Aqueous
Sodium Thiosulfate 5%, Aqueous
Van Gieson Stain

FONTANA MASSON STAIN KIT

Silver Nitrate 10%, Aqueous
Ammonium Hydroxide 28-30%, ACS
Gold Chloride 0.2%, Aqueous
Sodium Thiosulfate 5%, Aqueous
Nuclear Fast Red Stain, Kernechtrot

FUNGUS, GROCOTT METHENAMINE SILVER (GMS) STAIN KIT

Chromic Acid 5%, Aqueous
Sodium Bisulfite 1%, Aqueous
Silver Nitrate
Methenamine Borate
Gold Chloride 0.1%, Aqueous
Sodium Thiosulfate 2%, Aqueous
Light Green SF Yellowish Stain 0.2%, Aqueous

FUNGUS, PAS/LIGHT GREEN STAIN KIT

Periodic Acid 0.5%, Aqueous
Schiff Reagent, McManus
Light Green SF Yellowish Stain 0.1%, Aqueous

COMPONENT LIST

GRAM, BROWN-BRENN MODIFIED STAIN KIT

Crystal Violet-Oxalate Stain, Alcoholic
Iodine, Gram, Aqueous
Acetone-Alcohol 1:1
Basic Fuchsin Stain 0.25%, Aqueous
Tartrazine Stain 0.25%, Acetic Aqueous

GRAM, BROWN-HOPPS STAIN KIT

Crystal Violet Stain 1%, Aqueous, Brown-Hopps
Iodine, Gram, Aqueous
Basic Fuchsin Stain 0.25%, Aqueous
Gallego Solution
Picric Acid-Acetone 0.05%
Acetone-Xylene 1:1

GRAM, HUCKER-TWORT STAIN KIT

Crystal Violet-Oxalate Stain, Alcoholic
Iodine, Lugol's, Aqueous
Neutral Red Stain 1%, Alcoholic
Fast Green Stain 1%, Alcoholic

HELICOBACTER PYLORI STAIN KIT

Periodic Acid 1%, Aqueous
Sodium Metabisulfite 5%, Acidified
Alcian Yellow Stain 1%, Alcoholic
Toluidine Blue Stock Stain 1%, Aqueous
Sodium Hydroxide 3%, Aqueous

IRON, GOMORI PRUSSIAN BLUE STAIN KIT

Hydrochloric Acid 20%, Aqueous
Potassium Ferrocyanide 10%, Aqueous
Nuclear Fast Red Stain, Kernechtrot

JONES BASEMENT MEMBRANE STAIN KIT

Methenamine 3%, Aqueous
Silver Nitrate 5%, Aqueous
Sodium Borate 5%, Aqueous
Periodic Acid 1%, Aqueous
Gold Chloride 0.25%, Aqueous
Sodium Thiosulfate 2.5%, Aqueous
Light Green SF Yellowish Stain 0.1%, Aqueous

LUXOL FAST BLUE (LFB) - CRESYL VIOLET STAIN KIT

Luxol Fast Blue Stain 0.1%, Alcoholic
Lithium Carbonate 0.5%, Aqueous
Cresyl Violet Stain, Aqueous
Acetic Acid 10%, Aqueous

MOVAT-RUSSELL MODIFIED PENTACHROME STAIN KIT

Alcian Blue Stain 1%, Aqueous
Ammonium Hydroxide 28-30%, ACS
Hematoxylin 10%, Alcoholic
Ferric Chloride 10%, Aqueous
Iodine, Verhoeff, Aqueous
Ferric Chloride 2%, Aqueous
Sodium Thiosulfate 5%, Aqueous
Crocein Scarlet 7B Stain, Aqueous
Acid Fuchsin Stain, Aqueous
Phosphotungstic Acid 5%, Aqueous
Orange G Stain 1%, Aqueous
Acetic Acid 0.5%, Aqueous

MUCIN, MAYER MUCICARMINE STAIN KIT

Ferric Chloride, Acidified (Set Part A)
Hematoxylin 1%, Alcoholic (Set Part B)
Mucicarmine Stock Stain, Mayer
Metanil Yellow Stain, Aqueous

OIL RED O STAIN KIT

Propylene Glycol 100%, ACS
Oil Red O Stain, Propylene Glycol
Propylene Glycol 85%, Aqueous
Hematoxylin Stain, Mayer Modified

PERIODIC ACID SCHIFF (PAS) STAIN KIT

Periodic Acid 0.5%, Aqueous
Schiff Reagent, McManus
Hematoxylin Stain, Harris
Acid Alcohol 1%
Lithium Carbonate, Saturated Aqueous

PHOSPHOTUNGSTIC ACID HEMATOXYLIN (PTAH) STAIN KIT

Zenker Fixative, Modified, Zinc Chloride
Acetic Acid, Glacial, ACS
Potassium Permanganate 0.25%, Aqueous
Oxalic Acid 5%, Aqueous
Phosphotungstic Acid Hematoxylin (PTAH) Stain



RETICULUM, GORDON & SWEETS STAIN KIT

Potassium Permanganate 1%, Aqueous
 Oxalic Acid 1%, Aqueous
 Ferric Ammonium Sulfate 2.5%, Aqueous
 Silver Nitrate 10%, Aqueous
 Ammonium Hydroxide 28-30%, ACS
 Sodium Hydroxide 3%, Aqueous
 Formalin 10%, Aqueous
 Gold Chloride 0.2%, Aqueous
 Sodium Thiosulfate 5%, Aqueous
 Nuclear Fast Red Stain, Kernechtrot

STEINER-CHAPMAN MODIFIED SILVER STAIN KIT

Zinc Formalin Sensitizer
 Silver Nitrate 1%, Aqueous
 Gum Mastic 2.5%, Alcoholic
 Hydroquinone, Powder

STEINER-STEINER MODIFIED SILVER STAIN KIT

Uranyl Nitrate 1%, Aqueous
 Silver Nitrate 1%, Aqueous
 Gum Mastic 2.5%, Alcoholic
 Hydroquinone, Powder

TRICHROME, GOMORI ONE-STEP, ANILINE BLUE STAIN KIT

Bouin Fluid
 Ferric Chloride, Acidified (Set Part A)
 Hematoxylin 1%, Alcoholic (Set Part B)
 Trichrome Stain, Gomori One-Step, Aniline Blue
 Acetic Acid 0.5%, Aqueous

TRICHROME, GOMORI ONE-STEP, FAST GREEN STAIN KIT

Bouin Fluid
 Ferric Chloride, Acidified (Set Part A)
 Hematoxylin 1%, Alcoholic (Set Part B)
 Trichrome Stain, Gomori One-Step, Fast Green
 Acetic Acid 0.5%, Aqueous

TRICHROME, MASSON, ANILINE BLUE STAIN KIT

Bouin Fluid
 Ferric Chloride, Acidified (Set Part A)
 Hematoxylin 1%, Alcoholic (Set Part B)
 Biebrich Scarlet-Acid Fuchsin Stain, Aqueous
 Phosphomolybdic-Phosphotungstic Acid, Aqueous
 Aniline Blue Stain, Aqueous
 Acetic Acid 0.5%, Aqueous

TRICHROME, MASSON, FAST GREEN STAIN KIT

Bouin Fluid
 Ferric Chloride, Acidified (Set Part A)
 Hematoxylin 1%, Alcoholic (Set Part B)
 Biebrich Scarlet-Acid Fuchsin Stain, Aqueous
 Phosphotungstic Acid 5%, Aqueous
 Fast Green Stain 2.5%, Aqueous
 Acetic Acid 0.5%, Aqueous

TRICHROME, MCLETCHE, ANILINE BLUE STAIN KIT

Biebrich Scarlet-Acid Fuchsin Stain, Aqueous
 Iodine, Lugol's, Aqueous
 Phosphotungstic Acid 2%, Alcoholic
 Aniline Blue Stain, Aqueous



1020 Prairie View Ct • Wauaukee, WI 53597-8512 • 800-383-7799

www.newcomersupply.com