

PD-L1 Analyte Control^{DR}



PRODUCT INFORMATION

- For Research Use Only
- 4 Cores: 1 negative core, 3 cores showing a range of expression for PD-L1

PRODUCT OPTIONS

- Part HCL019 2 slides
- Part HCL020 5 slides
- Part HCL021 1 block

HistoCyte Laboratories' PD-L1 Analyte Control^{DR} consists of four different cell lines with PD-L1 expression levels of high, intermediate, low, and negative. Ideal for use as a same slide control to demonstrate the sensitivity of your assay and improve confidence in the result. These cell lines are derived from the following tumors:

Cell line A: Breast ductal carcinoma

Cell line B: Osteosarcoma

Cell line C: Fibrosarcoma

Cell line D: T-cell non-Hodgkin lymphoma

1. Cells are fixed in 10% neutral buffered formalin and paraffin wax embedded.
2. Sections are cut at 4µm, mounted on positively charged slides and dried overnight at 37°C.
3. Cell microarray (CMA) cores are 1.5-2mm in diameter and 3-3.5mm in length. It is possible to obtain over 300 sections depending on thickness.

Distributed by:

NEWCOMER SUPPLY

800-383-7799
info@newcomersupply.com

2505 Parview Road
Middleton, WI 53562-2579

HistoCyte
laboratories



Cell Line Controls

Research Use Only (RUO)

HistoCyte Laboratories Ltd uses proprietary methods to process cell lines into tissue-like controls for laboratories challenged to find suitable control tissue including low and intermediate expressing biomarkers.

The cell line controls are standardized to provide consistent and reliable morphology, resulting in dependable staining throughout the block, and providing each laboratory with the confidence of repeatable expression. These products also have the advantage of being manufactured to a reproducible standard and with an inexhaustible supply.



PRODUCT ADVANTAGES

- Ideal for IHC and ISH
- Can obtain 300 sections from a block
- Saves time and resources
- Provides staining confidence

PRODUCT INFORMATION

- 2 slides – 4µm sections on charged slides and dried overnight at 37°C
- 5 slides – 4µm sections on charged slides and dried overnight at 37°C
- Block – Cell microarrays (CMA) containing cores 1.5-2mm in diameter and 3-3.5mm in length

Fixation: 10% neutral buffered formalin

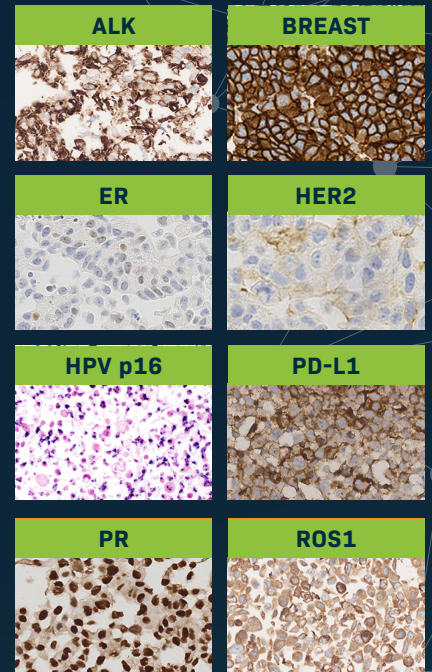
Storage: 2-8°C. Do not freeze.

Distributed by:



Dynamic Range Controls

Full Range of Expression



Standard Controls

Positive & Negative Expression

