

HER2 Analyte Control^{DR}



PRODUCT INFORMATION

- For Research Use Only
- 4 Cores: negative, 1+, 2+, 3+ for HER2 IHC. non-amplified, equivocal, and amplified for HER2 ISH

PRODUCT OPTIONS

- Part HCL026 2 slides
- Part HCL027 5 slides
- Part HCL028 1 block

HistoCyte Laboratories' HER2 Analyte Control^{DR} consists of four different cell lines that demonstrate full Dynamic Range of expression for HER2. This cell line control is specifically aimed at those wanting the most reliable, sensitive, and accurate control for HER2. These cell lines are derived from the following tumors:

- Cell line A: Breast adenocarcinoma
- Cell line B: Breast adenocarcinoma
- Cell line C: Gastric adenocarcinoma
- Cell line D: Breast adenocarcinoma

1. Cells are fixed in 10% neutral buffered formalin and paraffin wax embedded.
2. Sections are cut at 4µm, mounted on positively charged slides and dried overnight at 37°C.
3. Cell microarray (CMA) cores are 1.5-2mm in diameter and 3-3.5mm in length. It is possible to obtain over 300 sections depending on thickness.

Distributed by:

NEWCOMER SUPPLY

800-383-7799
info@newcomersupply.com

2505 Parview Road
Middleton, WI 53562-2579

HistoCyte
Laboratories



Cell Line Controls

Research Use Only (RUO)

HistoCyte Laboratories Ltd uses proprietary methods to process cell lines into tissue-like controls for laboratories challenged to find suitable control tissue including low and intermediate expressing biomarkers.

The cell line controls are standardized to provide consistent and reliable morphology, resulting in dependable staining throughout the block, and providing each laboratory with the confidence of repeatable expression. These products also have the advantage of being manufactured to a reproducible standard and with an inexhaustible supply.



PRODUCT ADVANTAGES

- Ideal for IHC and ISH
- Can obtain 300 sections from a block
- Saves time and resources
- Provides staining confidence

PRODUCT INFORMATION

- 2 slides – 4µm sections on charged slides and dried overnight at 37°C
- 5 slides – 4µm sections on charged slides and dried overnight at 37°C
- Block – Cell microarrays (CMA) containing cores 1.5-2mm in diameter and 3-3.5mm in length

Fixation: 10% neutral buffered formalin

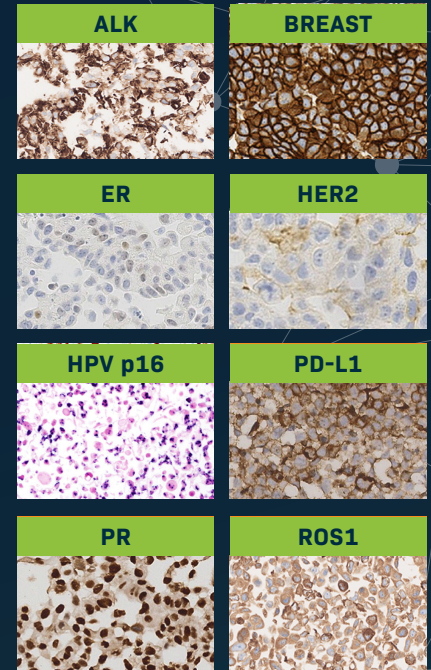
Storage: 2-8°C. Do not freeze.

Distributed by:



Dynamic Range Controls

Full Range of Expression



Standard Controls

Positive & Negative Expression

