

# QUANTOFIX<sup>®</sup> Sulfite

## Pack content:

1 aluminium container with 100 test strips

## Measuring range:

Visually  
10–1000 mg/L  $\text{SO}_3^{2-}$

Reflectometrically  
10–500 mg/L  $\text{SO}_3^{2-}$

## Color gradation:

0 · 10 · 25 · 50 · 100 · 250 · 500 · 1000 mg/L  $\text{SO}_3^{2-}$

## General indications:

Remove only as many test strips as are required. Close the container immediately after removing a strip. Do not touch the test field.

## Instructions for use:

1. Dip the test strip into the sample (pH 6–9) for 1 s.
  2. Shake off excess liquid.
  3. Wait 20 s.
  4. Compare the test field with the color scale.
- If sulfite ions are present, the test field turns salmon-pink.

## Interferences:

Acidic test solutions (i.e. white wine) must be buffered with solid sodium acetate prior to testing because the test paper does not react in acidic media. Sulfide ions also lead to a red coloration of the test paper in neutral solutions. This interference can be eliminated by adding an excess of nickel (II) ions. The nickel sulphide formed can be removed by filtration. Larger amounts of reducing agents such as hydroxylammonium chloride or ascorbic acid interfere with the determination leading to falsely low test results.

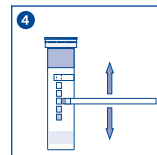
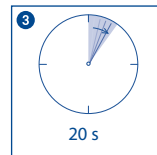
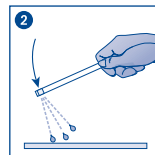
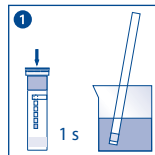
## Disposal:

Used test strips can be placed in the normal household waste.

## Storage:

Avoid exposing the strips to sunlight and moisture. Keep container cool and dry (storage temperature not above +30 °C).

If correctly stored, the test strips may be used until the use-by-date printed on the packaging.



## Product data and ordering information

Type	Semi-quantitative test strips
Presentation	Tube of 100 test strips
Color reaction	white to salmon
Gradation	0 · 10 · 25 · 50 · 100 · 250 · 500 · 1000 mg/l (ppm) $\text{SO}_3^{2-}$
REF	91306

Distributed By:

**NEWCOMER<sup>®</sup> SUPPLY**  
Your Histology Supplier

2505 Parview Road, Middleton, WI 53562-2579

(608) 831 • 7888 PHONE

(800) 383 • 7799 TOLL FREE

(608) 831 • 0866 FAX