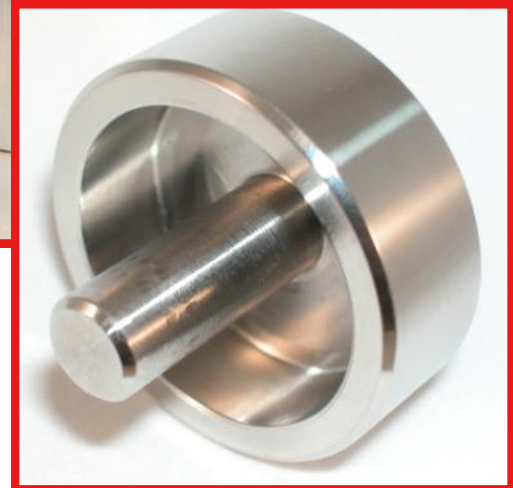


CRYOALIGNER

CRYOSTAT ALIGNMENT TOOL INSTRUCTION MANUAL



Tech One Biomedical

ALIGNMENT IN MINUTES!

For technical service and questions: call 866-497-3033 Ext. 10

or

email: matt@techoneweb.com

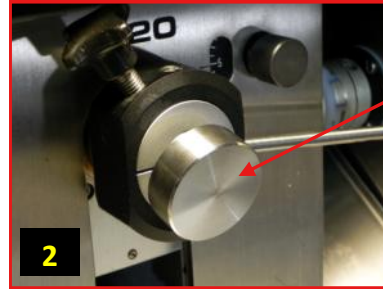
INSTRUCTIONS FOR ALIGNING THE CHUCK AND BLADE HOLDER:

(Always wear gloves when working on a Cryostat)

Chuck is out of Alignment



Loosen clamping adjustment knob and remove tissue chuck.



Replace tissue chuck with CryoAligner tool.



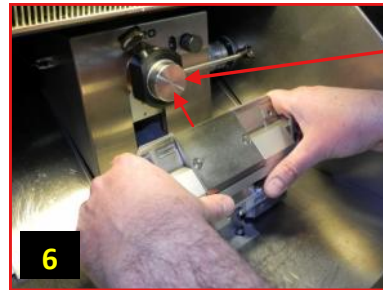
Loosen both the orienting & clamping adjustment knobs to position tool.



Press the CryoAligner tool flush against back surface and tighten the clamping adjustment knob.

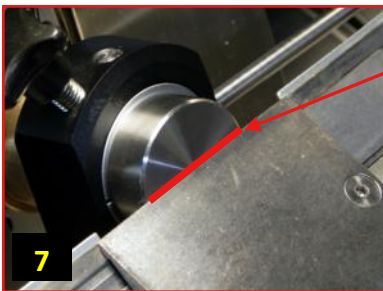


Tighten the orienting adjustment knob to lock in new alignment.

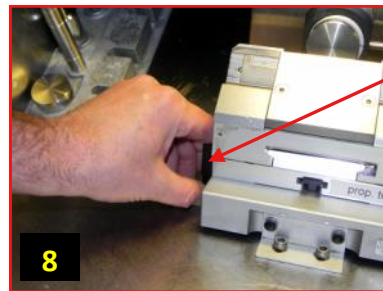


Position blade holder (w/out blade) to start moving towards CryoAligner's front flat surface.

REMOVE BLADE FROM BLADE HOLDER BEFORE PROCEEDING WITH THIS STEP.



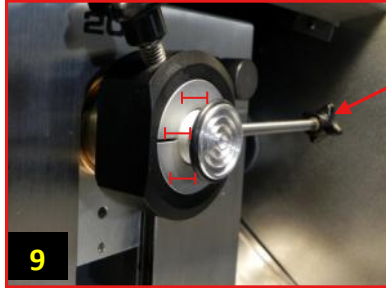
GENTLY, bring the blade holder surface against CryoAligner tool's surface so that it is perfectly aligned & flush.



Tighten placement knob to secure aligned position of the blade holder to the CryoAligner tool.

BE VERY CAREFUL WHEN BRINGING THE BLADE HOLDER'S METAL SURFACE TO THE CRYO-ALIGNER'S SURFACE TO PREVENT ANY POSSIBLE DAMAGE.

INSTRUCTIONS FOR ALIGNING THE CHUCK AND BLADE HOLDER CONTINUED:



Loosen clamping adjustment knob and remove the CryoAligner tool and replace it with the tissue chuck. Tighten the clamping adjustment knob & the tissue chuck will be in perfect alignment to the base assembly.



10

Tissue Chuck & Blade Holder in
PERFECT ALIGNMENT!

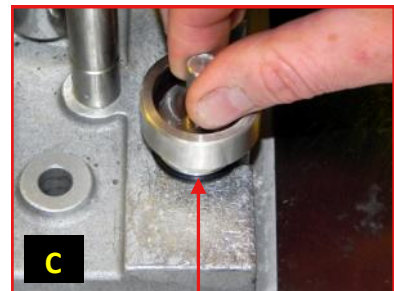
ADDITIONAL APPLICATION AS A HEAT EXTRACTOR TOOL:



A



B



C

The construction on the CryoAligner is made of Stainless Steel making it an excellent Heat Extractor for your frozen tissue sections.



D



E



F