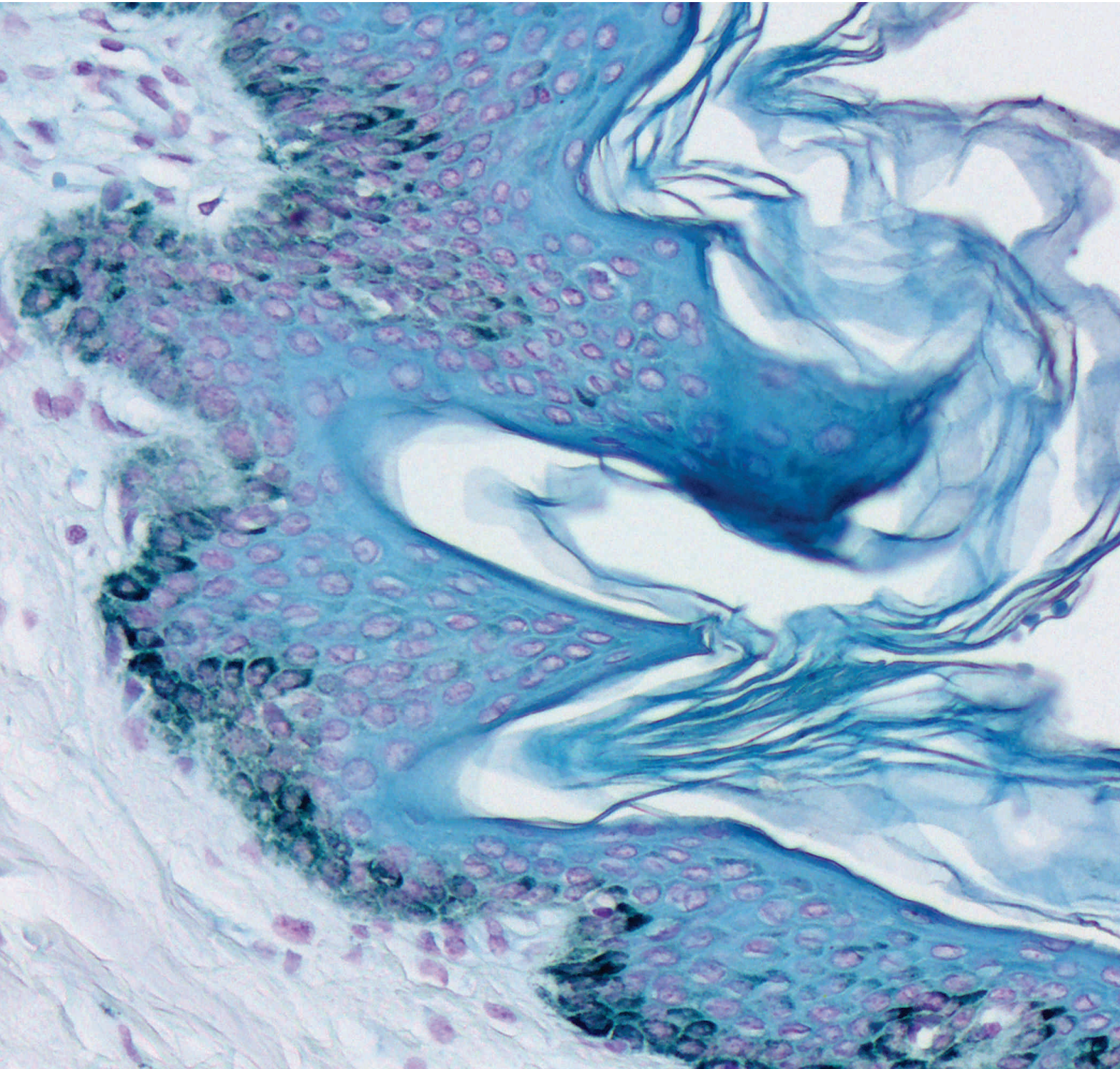


CONTROL SLIDES



NEWCOMEN  SUPPLY[®]

Mission

Keeping it real: Our job is to help you get your job done! Everything we do is designed with your needs in mind. Our goal is to make sure your goals are met.

Keeping the lines of communication open: Our technical support staff is ready to help you solve problems, resolve concerns, and make sure that your procedures run as smoothly as possible.

Keeping prices competitive: We take pride in making sure our products arrive at your lab with the fairest price possible.

Keeping a sense of humor: Life is Good! Don't forget that. We won't. If you're having a bad day, don't worry, it's our joy to make sure your day is full of HISTOCALIFRAGILISTICEXPIALIDOCIOUS!

"Most people are
about as happy
as they make
up their minds
to be." -Abraham Lincoln

We work hard to bring you the best histology supply services available. Please call 800-383-7799 or e-mail info@newcomersupply.com with any questions or comments. For technical concerns, contact tech@newcomersupply.com



PLACING AN ORDER

To place an order, contact customer service by phone, fax, mail or email. Our experienced staff is available and ready to help you find the histology laboratory products you need. To see our current product listings, please visit our website. Our hours of operation are Monday through Friday 8 a.m. to 5 p.m. CST. Newcomer Supply reserves the right to refuse any order.

Mail	Newcomer Supply Inc. Attn: Customer Service 1020 Prairie View Ct Waunakee, WI 53597-8512 USA
Phone	1-800-383-7799
Fax	1-608-831-0866
Email	orders@newcomersupply.com
Website	www.newcomersupply.com

PRICING

All prices are quoted in U.S. dollars. Newcomer Supply reserves the right to revise prices without notice. Orders will be invoiced at the price in effect on the day the order is processed. Quantity and standing order discounts are available upon request. Custom orders are subject to additional charges. Pricing does not include freight, handling charges, or taxes of any kind. Customers are responsible for paying any applicable taxes once invoiced by Newcomer Supply, or shall provide up to date and accurate tax exemption certificates.

SHIPPING

In the UNITED STATES, orders are processed and shipped usually within 3 working days from receipt of the order for In Stock inventory. *Made to Order* items are processed and shipped within 1-2 weeks. *Out of Stock, Custom and Special Request* orders ship within 2-3 weeks. If there is an unusual delay, we will notify you. Orders are shipped F.O.B. Waunakee, WI, or other point of shipment pre-pay via common carrier. Third party freight accounts are accepted. If an "H" appears in the "Price" column in the website or catalog, a carrier mandated hazardous chemical charge may apply. Due to certain IATA restrictions, Newcomer Supply reserves the right to refuse to ship hazardous chemicals by air. Newcomer Supply does not accept hazardous chemical returns.

TERMS

Payment terms are net 30 days. Overdue amounts are subject to carrying charges of 1.5% per month. We accept payment by check, wire transfer, EFT, Visa, and MasterCard. We reserve the right to require prepayment by those customers that cannot meet our terms. Shipments will not be made to customers with a "Past Due" invoice pending. A handling fee may be applied per order. Credit memos will be honored for 6 months. No cash refunds.

RETURNS

Contact Newcomer Supply prior to returning any product. If you have a problem with a product or shipment, call us within five business days of the issue. Returns without a Return Materials Authorization "RMA" will not be accepted. Returns must be packaged as received and delivered undamaged within two weeks of RMA date. If you ordered a product in error and request a return, a 25% restocking fee is applicable. Customers are responsible for return shipment costs. Original freight costs will not be credited. All custom orders are final, no returns. Newcomer Supply does not accept hazardous chemical returns.

GENERAL INFORMATION

All products represented in the Newcomer Supply catalog are intended only for in vitro laboratory use by qualified professionals. They are not intended for drug, cosmetic, food, agricultural, pesticide, or household use. Any use other than that specifically authorized voids any and all warranties.

SAFETY INFORMATION

For shelf life and storage temperature refer to individual product label. Chemicals should be handled only by qualified individuals trained in laboratory procedures and familiar with the potential hazards. Safety Data Sheets are available on our website, by email or mail. Technical Memos describing procedural methods are available for our customers via our website, mail or email.

LIMITED WARRANTY

NEWCOMER SUPPLY, INC. ("NEWCOMER") warrants only that products manufactured by NEWCOMER are as represented in the catalog, and that products sold under the NEWCOMER label meet the minimum published specifications as to chemical and physical properties at the time of sale. NEWCOMER is not responsible if age or conditions of shipment or storage alter the physical and/or chemical properties of any products. If any product does not meet the standards of this warranty, NEWCOMER will, at its sole option, either (A) replace the product or products that do not meet this warranty; or (B) refund the purchase price for the product or products that do not meet this warranty; PROVIDED the product or products which do not meet this warranty are returned to NEWCOMER for inspection within thirty (30) days of the Date of Invoice, and such inspection reveals, to the sole satisfaction of NEWCOMER, that the warranty has been breached. This warranty is exclusive. NEWCOMER specifically disclaims any and all other warranties, express or implied, including the implied warranties of merchantability, fitness for a particular purpose, non-infringement and otherwise. In no event will NEWCOMER be liable for any lost revenue, lost profit, lost data, or attorney fees, or for any special, indirect, consequential, incidental, or punitive damages, however caused and regardless of the theory of liability. In no event shall NEWCOMER'S liability, if any, whether in contract, tort (including negligence), or otherwise, exceed the purchase price actually paid for the product or products that fail to meet this warranty.

SPECIAL REQUESTS

Newcomer Supply allows customers the option of ordering “special request” control slides for our histopathology and immunopathology product lines. A special request allows a customer to modify any control slide product to meet their lab’s exact control needs. Commonly requested changes are:

- Tissue Placement
- Drying Method
- Section Thickness
- Slide Glass

For these orders an “SR” is added to the end of the standard part number to signify the modification. Special requests are made to order and may take up to 2-3 weeks to manufacture.

Additional costs are applied to Special Requests. Please see our website or contact us for pricing.

Below are the options for special request orders. If you do not find the option you are interested in, please contact our Technical Support Department.

TISSUE PLACEMENT

The standard tissue placement is mid-high on the slide. Options for special request tissue placement are mid and low.

DRYING METHOD

The standard drying method is air dried with the slide oriented horizontally. Options for special request drying are oven dried at 60°C for 60 minutes and/or vertically dried.

SECTION THICKNESS

The standard section thickness for most histopathology and immunopathology control slides is 4 microns. Some products vary from this standard. A special request for micron thickness is provided by the customer and approved by our Technical Support Department.

SLIDE GLASS

The standard slide glass is Superfrost® Plus. A special request for an alternate type of slide glass can be made, including slide glass provided by the customer and approved by our Technical Support Department.

QUESTIONS

If you have questions about ordering special request control slides, please contact our Technical Support Department at 800-383-7799 or tech@newcomersupply.com.

Newcomer Supply Custom Tissue Slides feature an inventory of human and animal tissue slides for your custom histochemical and immunohistochemical (IHC) staining needs. Custom Tissue Slides are Formalin Fixed Paraffin Embedded (FFPE) sections with availability from a wide range of organs and a variety of disease states. Custom Tissue Slides are sold in sets of 10 unstained slides with one complimentary hematoxylin and eosin (H&E) stained slide included, all mounted on Superfrost® Plus slides. (Custom Tissue Slides that are designated as "Limited Availability" are sold in sets of 5 unstained slides and do not include a stained H&E slide.)

Your Custom Control Slide order can be further customized with choice of:

- Microscope slide, glass type
- Tissue placement
- Section thickness
- Drying options

INTENDED USES:

- IHC validation
- Antibody development
- Student and teaching purposes
- Research
- Tissue type comparisons

AVAILABLE TISSUES:

- Human
- Human Abnormal
- Animal
- Animal Abnormal

Slides are cut per confirmed order, delivery time will be dependent on the custom options ordered.

We strive to assure the tissue meets the specifications we provide for pathological and histological characteristics. We cannot provide assurances that the tissue will be reactive in all applications.

For detailed information on the Custom Tissue Slide products we have available, please visit our website at:
www.newcomersupply.com/products/custom-tissue-slides

TABLE OF CONTENTS

HISTOPATHOLOGY

Acid Fast Bacteria (AFB), Animal	7	Fungus, PAS, Candida, Artificial	14
Alcian Blue pH 2.5, Umbilical Cord	7	Fungus, GMS, Multi-Tissue, Artificial	14
Alcian Blue pH 2.5, Goblet Cell	7	Giemsa	15
Alcian Blue pH 2.5, Barrett's Esophagus	8	Gram Positive & Gram Negative Bacteria, Animal	15
Alcian Blue pH 2.5, Multi-Tissue	8	Gram Positive & Gram Negative Bacteria, Artificial	15
Alcian Blue/PAS	8	Gram, Multi-Tissue, Artificial	15
Amyloid	8	Helicobacter, Animal	16
Amyloid, Animal	9	Helicobacter, Artificial	16
Argentaffin	9	Helicobacter	16
Basement Membrane	9	Hematoxylin and Eosin (H&E)	16
Bielschowsky	9	Histoplasma, Animal	17
Bile	10	Iron	17
Blastomyces	10	Iron, Animal	17
Blastomyces, Animal	10	Leptospira, Animal	17
Calcium	10	Luxol Fast Blue (LFB)	18
Cat Scratch, Artificial	11	Mast Cell	18
Colloidal Iron	11	Mast Cell, Animal	18
Colloidal Iron, Multi-Tissue	11	Melanin	18
Copper, Animal	11	Movat-Russell Pentachrome	19
Cryptococcus	12	Mucin Mucicarmine	19
Elastic, Aorta	12	Periodic Acid Schiff (PAS) Glycogen	19
Elastic, Skin	12	Phosphotungstic Acid Hematoxylin (PTAH)	19
Fite, Leprosy, Animal	12	Reticulum	20
Fite, Nocardia, Artificial	13	Spirochete, Artificial	20
Fungus, GMS, Aspergillus	13	Spirochete, Animal	20
Fungus, GMS, Aspergillus, Artificial	13	Trichrome, Liver	20
Fungus, GMS, Aspergillus, Animal	13	Trichrome, Kidney	21
Fungus, GMS, Candida, Artificial	14	Trichrome, Uterus	21
Fungus, PAS, Aspergillus, Artificial	14	Trichrome, Multi-Tissue	21
		Urates	21



IMMUNOPATHOLOGY

Actin, Smooth Muscle	22	Epithelial Membrane Antigen (EMA)	30
ALK-Lymphoma Cell Line	22	Factor XIIIa	30
Alpha-Fetoprotein (AFP)	22	GATA3	30
BCL2	23	GCDFP-15	30
BCL6	23	Glial Fibrillary Acidic Protein (GFAP)	31
Calretinin	23	Helicobacter	31
Carcinoembryonic Antigen (CEA)	23	Helicobacter, Animal	31
CD3, T-Cell	24	Helicobacter, Artificial	31
CD8	24	Hepatitis B Surface Antigen (HBsAG)	32
CD10	24	HMB-45	32
CD20, B-Cell	24	Kappa	32
CD30	25	Ki-67	32
CD34	25	Lambda	33
CD45, Leucocyte Common Antigen (LCA)	25	Melan-A (MART-1)	33
CD56	25	Mismatch Repair (MMR) Positive	33
CD68	26	Neuron-Specific Enolase (NSE)	33
CD117, c-Kit	26	p16	34
CD138	26	p16 Cell Line	34
CDX2	26	p40	34
Chromogranin A	27	p53	34
CK5/14 + p63 + P504S, Multi-Tissue	27	p63	35
CK5/14 + p63 + P504S	27	PAX5	35
Cytokeratin AE1/AE3	27	PAX8	35
Cytokeratin 5/6 (CK5/6)	28	Prostate Specific Antigen (PSA)	35
Cytokeratin 7 (CK7)	28	S-100	36
Cytokeratin 20 (CK20)	28	SOX-10	36
Cytokeratin, HMW	28	Spirochete Treponema, Artificial	36
Cytomegalovirus (CMV)	29	Synaptophysin	36
Desmin	29	Thyroid Transcription Factor (TTF-1)	37
DOG1	29	Toxoplasma, Animal	37
E-cadherin	29	Vimentin	37
		Wilms' Tumor (WT1)	37

We have one of the largest selections of both histopathology and immunopathology control slides available. Also, we can accommodate special requests, such as tissue placement and specialty microscope slide glass. Additional charges may apply.

All control slides are on Superfrost® Plus.

All controls are cut in serial sections.

10/set = 10 unstained slides and 1 stained slide.

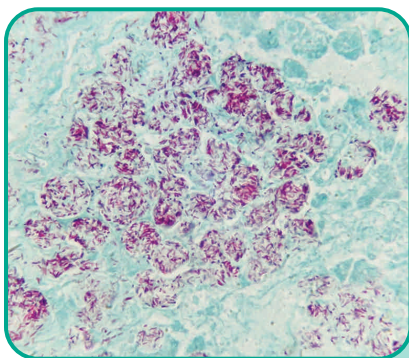
98/set = 98 unstained slides and 2 stained slides.

Please note the following: In human tissue unless otherwise indicated. All tissues are Formalin Fixed Paraffin Embedded (FFPE). All slides are air dried. Histopathology slides are cut at 4 microns, unless otherwise specified. Standard tissue placement is mid-high on slide. Histopathology control slides are not quality controlled for IHC methods, as such, we

cannot guarantee antigenicity. The intended use of these control slides is to qualitatively assess the performance of the special stain. These controls are not intended for quantitative purposes. Review the supplied stained slides with your pathologist prior to using the unstained slides to ensure that the intended analyte of interest is acceptable.

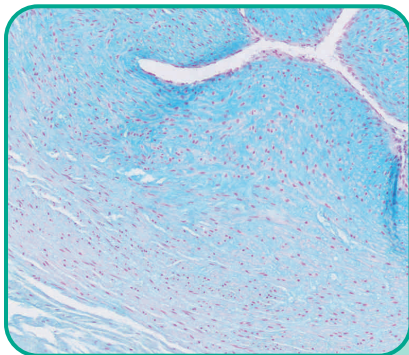
Special Requests

We do offer the ability for our customers to make *special requests* on our histopathology control slide product line. The most commonly fulfilled *special requests* are changes to the tissue placement, drying method, section thickness, and/or slide glass. When a *special request* has been applied to an order an **SR** is added to the end of the part number. Please see page 3 for more details.



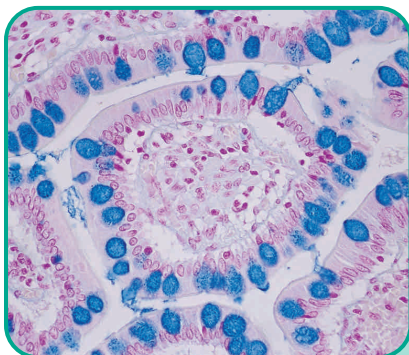
Acid Fast Bacteria (AFB), Animal

TISSUE	PART	VOLUME
(+) Animal Organ	4011A	10/set
	4011B	98/set



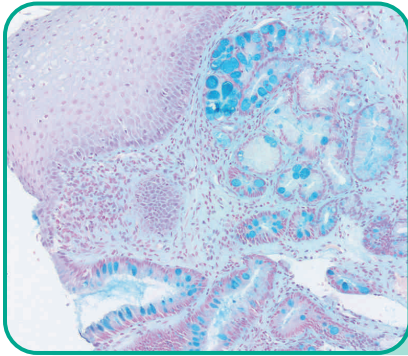
Alcian Blue pH 2.5, Umbilical Cord

TISSUE	PART	VOLUME
(+) Umbilical Cord	4020A	10/set
	4020B	98/set



Alcian Blue pH 2.5, Goblet Cell

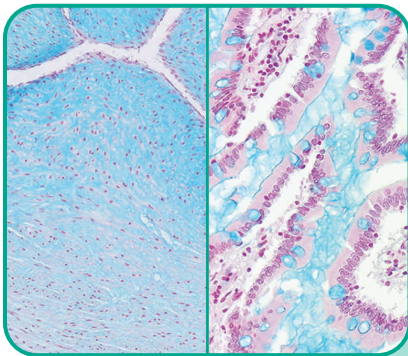
TISSUE	PART	VOLUME
(+) Small Intestine	4051A	10/set
	4051B	98/set



Alcian Blue pH 2.5, Barrett's Esophagus

TISSUE
(+) Barrett's Esophagus

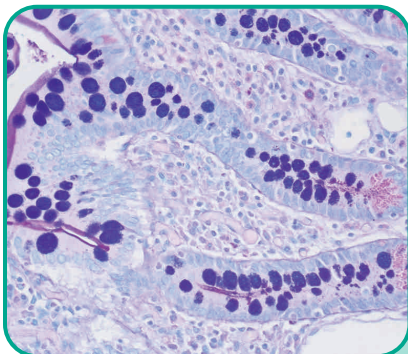
PART	VOLUME
4023A	10/set



Alcian Blue pH 2.5, Multi-Tissue

TISSUE
(+) Umbilical Cord
(+) Small Intestine

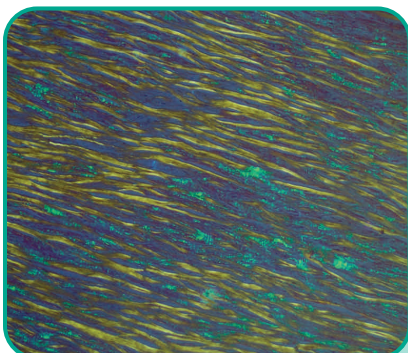
PART	VOLUME
4021A	10/set
4021B	98/set



Alcian Blue/PAS

TISSUE
(+) Small Intestine

PART	VOLUME
4022A	10/set
4022B	98/set

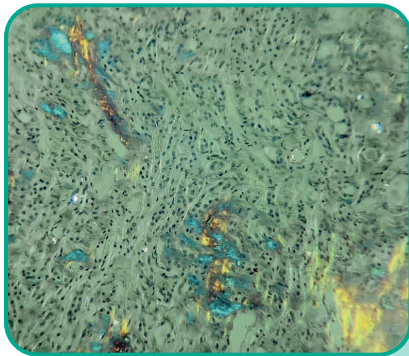


Amyloid

TISSUE
(+) Organ

PART	VOLUME
4030A	10/set
4030B	98/set

Due to the nature of the tissue the standard drying method for Amyloid Control Slides are oven dried. Tissue sections are cut at 8 microns.

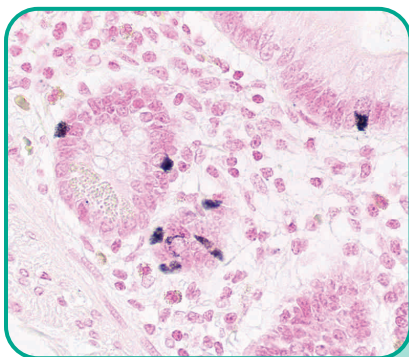


Amyloid, Animal

TISSUE
(+) Animal Organ

PART	VOLUME
4031A	10/set
4031B	98/set

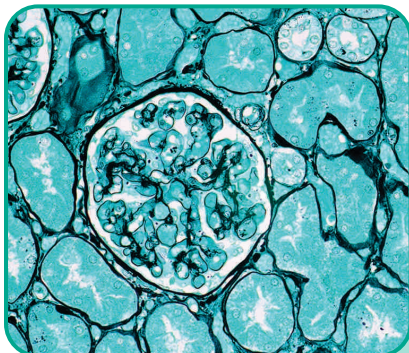
Due to the nature of the tissue the standard drying method for Amyloid Control Slides are oven dried. Tissue sections are cut at 8 microns.



Argentaffin

TISSUE
(+) Small Intestine

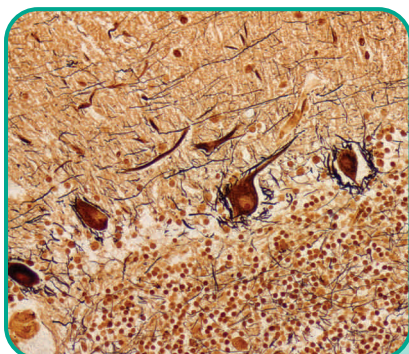
PART	VOLUME
4035A	10/set
4035B	98/set



Basement Membrane

TISSUE
(+) Kidney

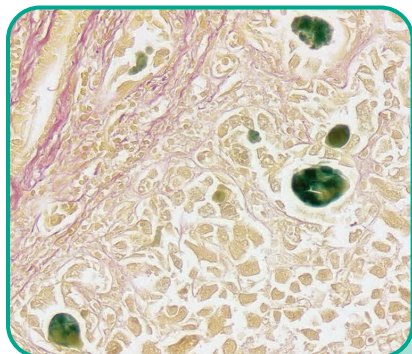
PART	VOLUME
4055A	10/set
4055B	98/set



Bielschowsky

TISSUE
(+) Brain

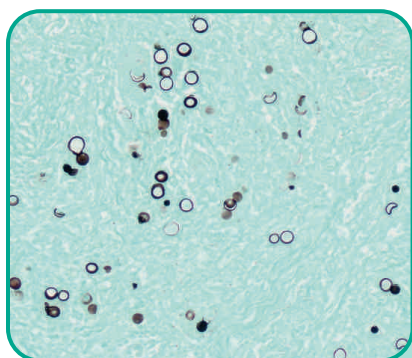
PART	VOLUME
4058A	10/set
4058B	98/set



Bile

TISSUE
(+) Liver

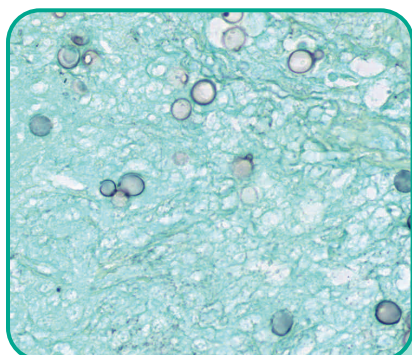
PART	VOLUME
4060A	10/set
4060B	98/set



Blastomyces

TISSUE
(+) Lung

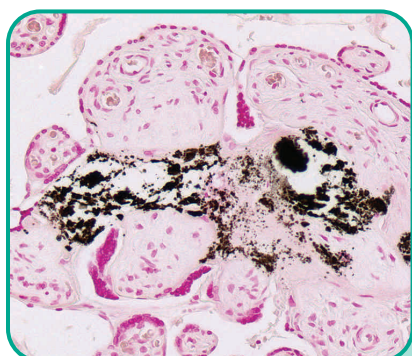
PART	VOLUME
4090A	10/set
4090B	98/set



Blastomyces, Animal

TISSUE
(+) Animal Organ

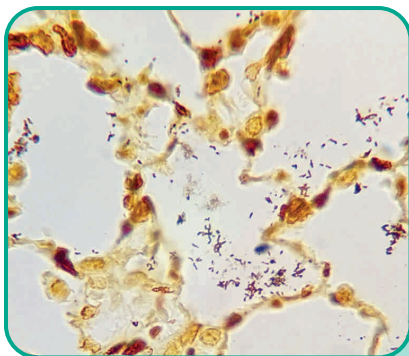
PART	VOLUME
4091A	10/set
4091B	98/set



Calcium

TISSUE
(+) Placenta

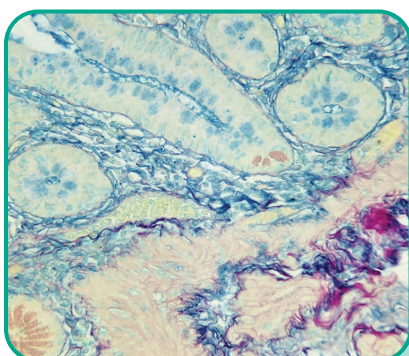
PART	VOLUME
4100A	10/set
4100B	98/set



Cat Scratch, Artificial

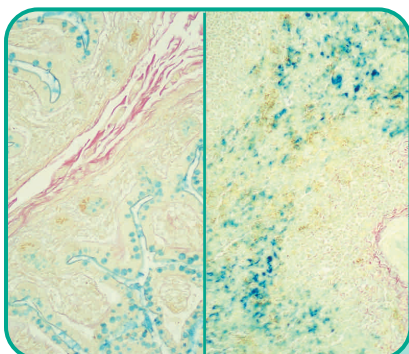
TISSUE	PART	VOLUME
(+) Rat Lung	4110A	10/set
	4110B	98/set

Organisms artificially introduced into a rat organ through a non-infectious process.



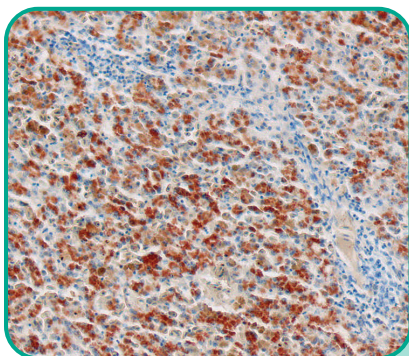
Colloidal Iron

TISSUE	PART	VOLUME
(+) Small Intestine	4127A	10/set
	4127B	98/set



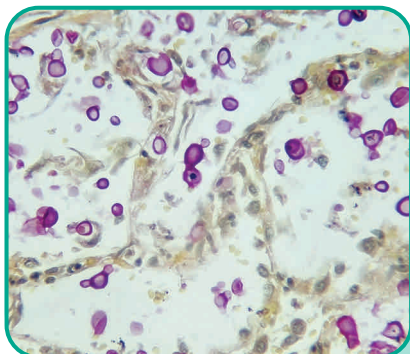
Colloidal Iron, Multi-Tissue

TISSUE	PART	VOLUME
(+) Small Intestine (+) Iron, Animal	4128A	10/set
	4128B	98/set



Copper, Animal

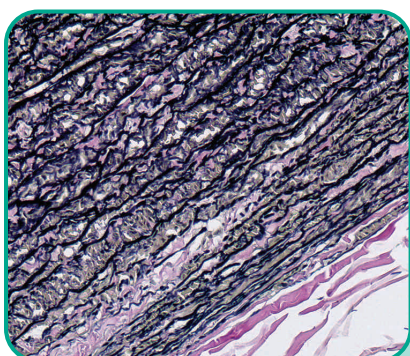
TISSUE	PART	VOLUME
(+) Animal Liver	4130A	10/set
	4130B	98/set



Cryptococcus

TISSUE
(+) Lung

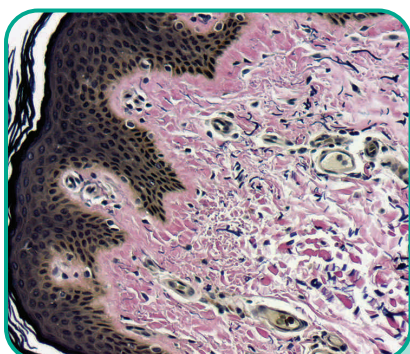
PART	VOLUME
4135A	10/set
4135B	98/set



Elastic, Aorta

TISSUE
(+) Aorta

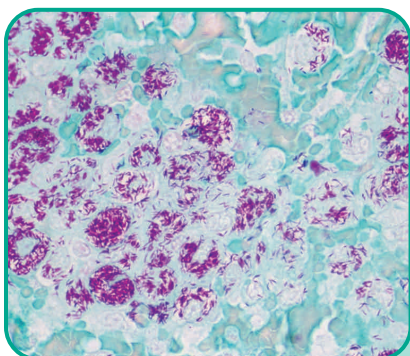
PART	VOLUME
4194A	10/set
4194B	98/set



Elastic, Skin

TISSUE
(+) Skin

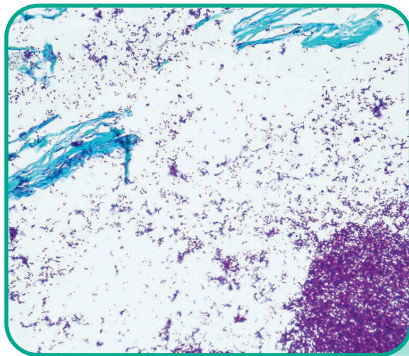
PART	VOLUME
4195A	10/set
4195B	98/set



Fite, Leprosy, Animal

TISSUE
(+) Animal Spleen

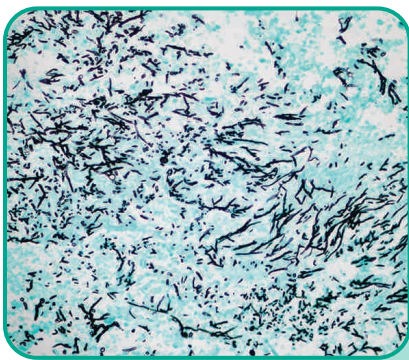
PART	VOLUME
4212A	10/set
4212B	98/set



Fite, Nocardia, Artificial

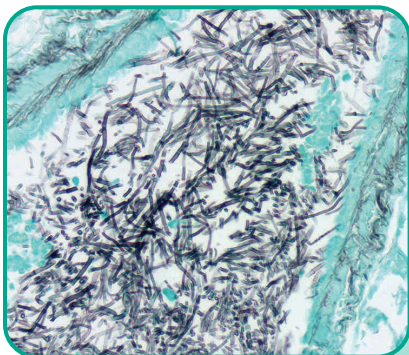
TISSUE	PART	VOLUME
(+) Rat Lung	4215A	10/set
	4215B	98/set

Nocardia sp. As procedural control for leprosy. Organisms artificially introduced into a rat organ through a non-infectious process.



Fungus, GMS, Aspergillus

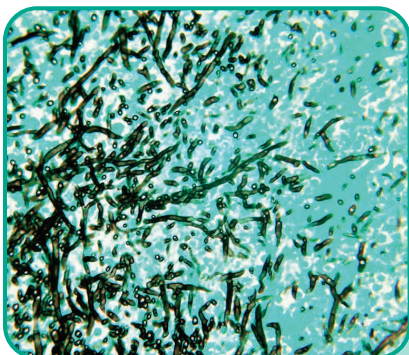
TISSUE	PART	VOLUME
(+) Organ	4223A	10/set
	4223B	98/set



Fungus, GMS, Aspergillus, Artificial

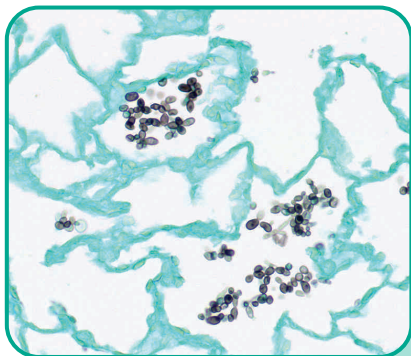
TISSUE	PART	VOLUME
(+) Rat Lung	4220A	10/set
	4220B	98/set

Organisms artificially introduced into a rat organ through a non-infectious process.



Fungus, GMS, Aspergillus, Animal

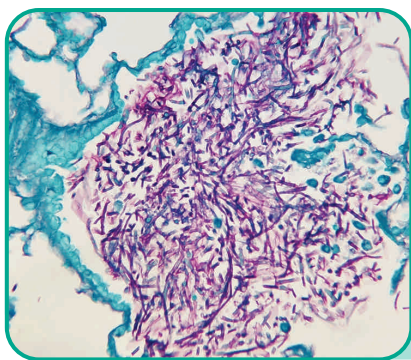
TISSUE	PART	VOLUME
(+) Animal Organ	4221A	10/set
	4221B	98/set



Fungus, GMS, Candida, Artificial

TISSUE	PART	VOLUME
(+ Rat Lung)	4230A	10/set
	4230B	98/set

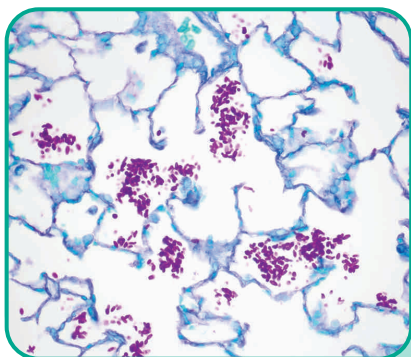
Organisms artificially introduced into a rat organ through a non-infectious process.



Fungus, PAS, Aspergillus, Artificial

TISSUE	PART	VOLUME
(+ Rat Lung)	4232A	10/set
	4232B	98/set

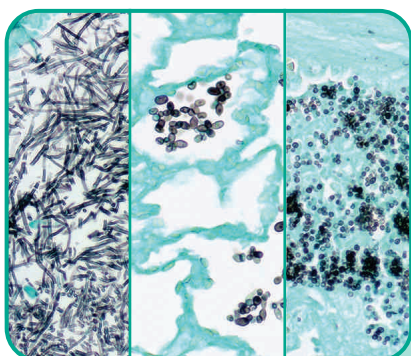
Organisms artificially introduced into a rat organ through a non-infectious process.



Fungus, PAS, Candida, Artificial

TISSUE	PART	VOLUME
(+ Rat Lung)	4233A	10/set
	4233B	98/set

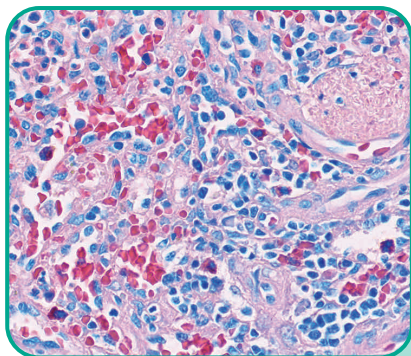
Organisms artificially introduced into a rat organ through a non-infectious process.



Fungus, GMS, Multi-Tissue, Artificial

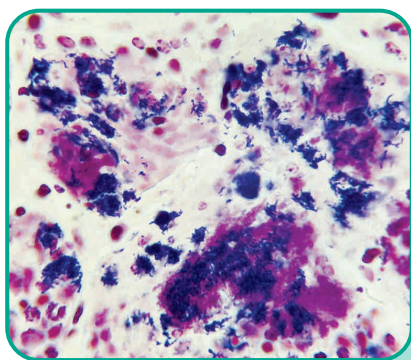
TISSUE	PART	VOLUME
(+) Aspergillus Rat Lung	4235A	10/set
(+) Candida Rat Lung		
(+) Histoplasma Animal	4235B	98/set

The Aspergillus and Candida Tissues are organisms artificially introduced into a rat organ through a non-infectious process.



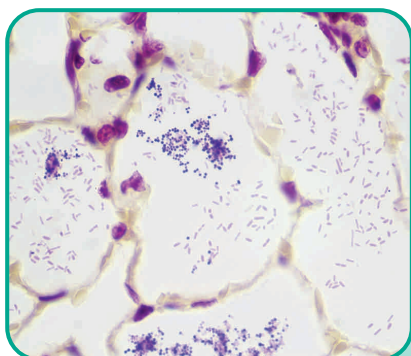
Giemsa

TISSUE	PART	VOLUME
(+ Spleen	4240A	10/set
	4240B	98/set



Gram Positive & Gram Negative Bacteria, Animal

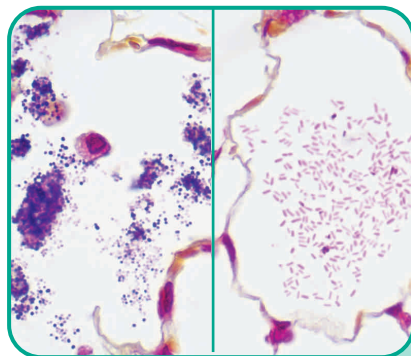
TISSUE	PART	VOLUME
(+ Animal Organ	4254A	10/set
	4254B	98/set



Gram Positive & Gram Negative Bacteria, Artificial

TISSUE	PART	VOLUME
(+ Rat Lung	4255A	10/set
	4255B	98/set

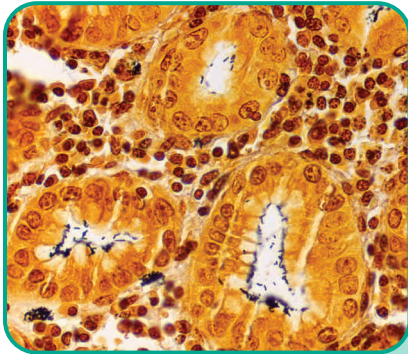
Organisms artificially introduced into a rat organ through a non-infectious process.



Gram, Multi-Tissue, Artificial

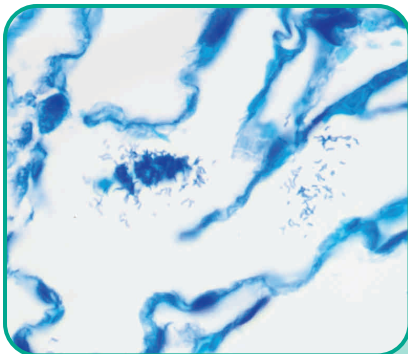
TISSUE	PART	VOLUME
(+) Gram Pos Rat Lung	4256A	10/set
(+) Gram Neg Rat Lung	4256B	98/set

Organisms artificially introduced into a rat organ through a non-infectious process.



Helicobacter, Animal

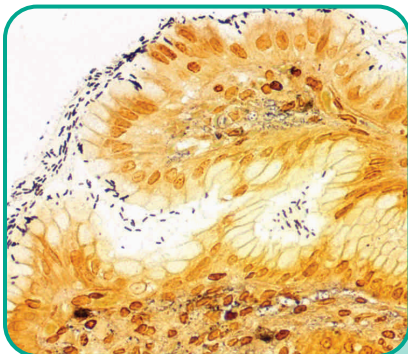
TISSUE	PART	VOLUME
(+) GI Tract, Animal	4274A	10/set
	4274B	98/set



Helicobacter, Artificial

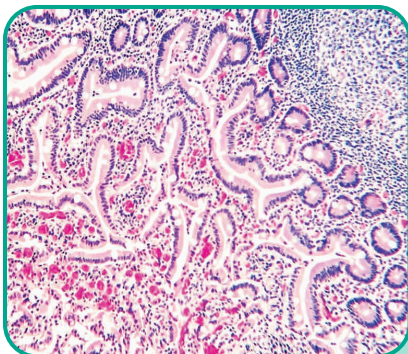
TISSUE	PART	VOLUME
(+) Rat Lung	4275A	10/set
	4275B	98/set

Organisms artificially introduced into a rat organ through a non-infectious process.



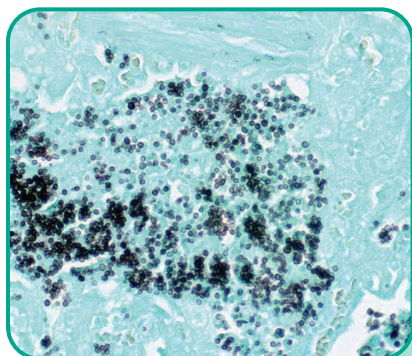
Helicobacter

TISSUE	PART	VOLUME
(+) GI Tract	4276A	10/set
	4276B	98/set



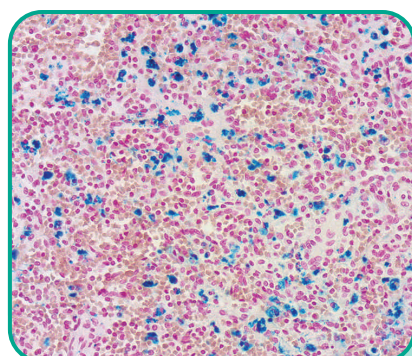
Hematoxylin and Eosin (H&E)

TISSUE	PART	VOLUME
(+) Small Intestine	4278A	10/set
	4278B	98/set



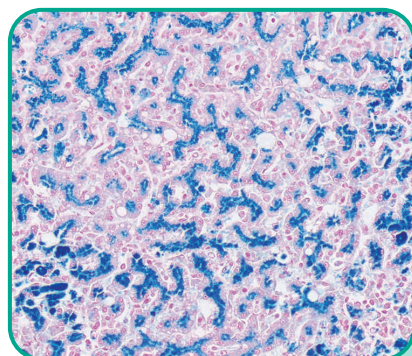
Histoplasma, Animal

TISSUE	PART	VOLUME
(+ Animal Organ	4290A	10/set
	4290B	98/set



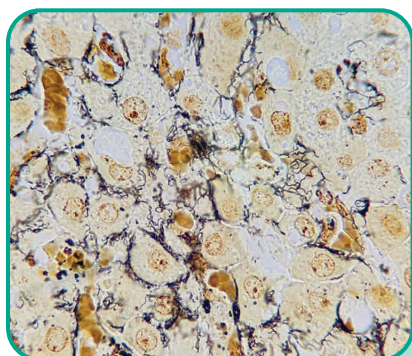
Iron

TISSUE	PART	VOLUME
(+ Liver or Spleen	4320A	10/set
	4320B	98/set



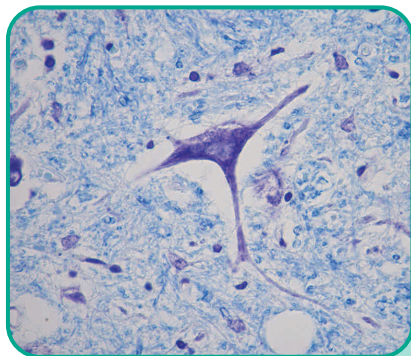
Iron, Animal

TISSUE	PART	VOLUME
(+ Animal Organ	4321A	10/set
	4321B	98/set



Leptospira, Animal

TISSUE	PART	VOLUME
(+ Hamster Liver	4402A	10/set
	4402B	98/set

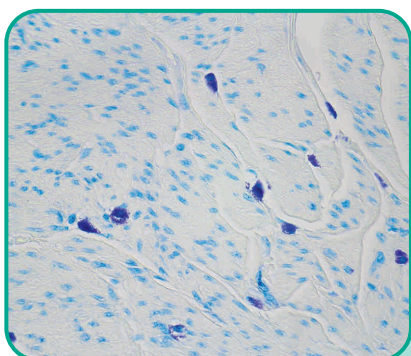


Luxol Fast Blue (LFB)

TISSUE
(+) Spinal Cord

PART	VOLUME
4407A	10/set
4407B	98/set

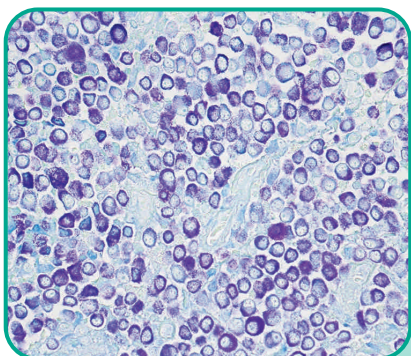
Cut at 8 microns.



Mast Cell

TISSUE
(+) Bladder

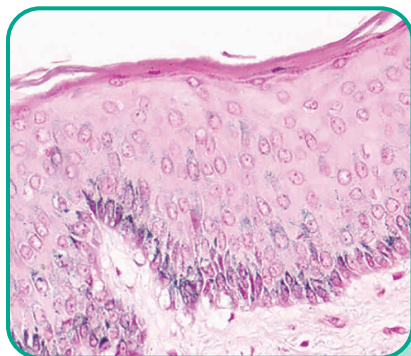
PART	VOLUME
4410A	10/set
4410B	98/set



Mast Cell, Animal

TISSUE
(+) Animal Tumor

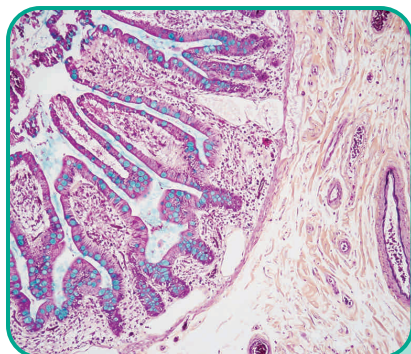
PART	VOLUME
4412A	10/set
4412B	98/set



Melanin

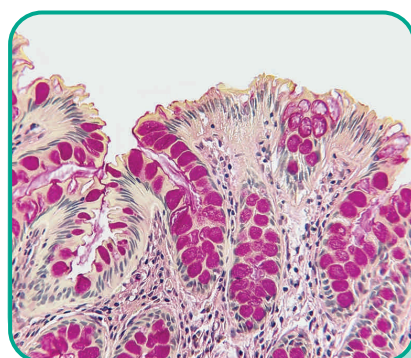
TISSUE
(+) Skin

PART	VOLUME
4430A	10/set
4430B	98/set



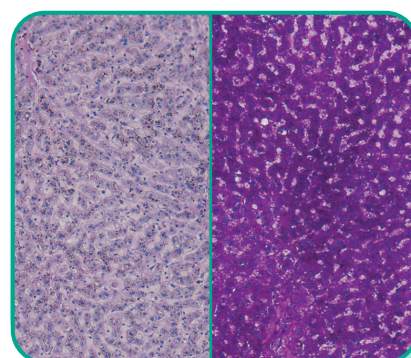
Movat-Russell Pentachrome

TISSUE	PART	VOLUME
(+) Small Intestine	4440A	10/set
(+) Lung	4440B	98/set



Mucin Mucicarmine

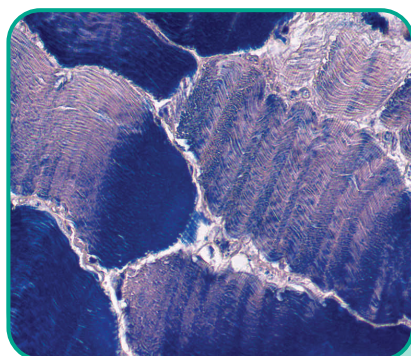
TISSUE	PART	VOLUME
(+) Colon	4455A	10/set
	4455B	98/set



Periodic Acid Schiff (PAS) Glycogen

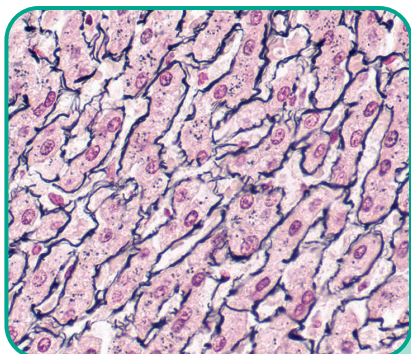
TISSUE	PART	VOLUME
(+) Liver	4540A	10/set
	4540B	98/set

With and without diastase digestion.



Phosphotungstic Acid Hematoxylin (PTAH)

TISSUE	PART	VOLUME
(+) Striated Muscle	4565A	10/set
	4565B	98/set



Reticulum

TISSUE

(+) Liver

PART

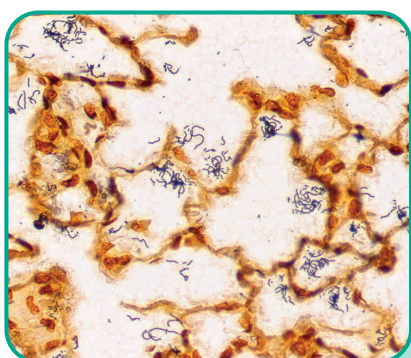
4620A

4620B

VOLUME

10/set

98/set



Spirochete, Artificial

TISSUE

(+) Rat Lung

PART

4655A

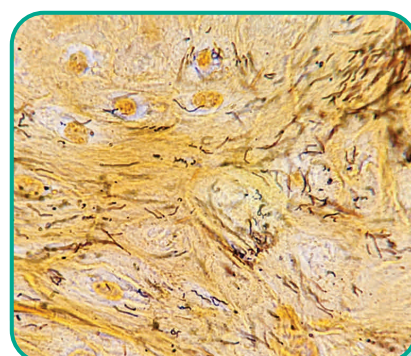
4655B

VOLUME

10/set

98/set

Organisms artificially introduced into a rat organ through a non-infectious process.



Spirochete, Animal

TISSUE

(+) Animal Organ

PART

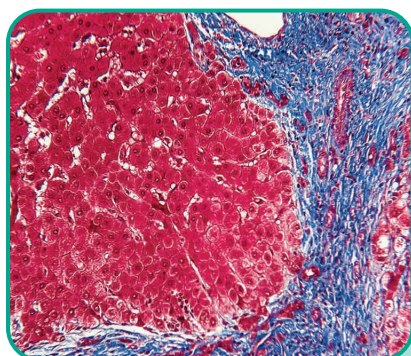
4660A

4660B

VOLUME

10/set

98/set



Trichrome, Liver

TISSUE

(+) Liver

PART

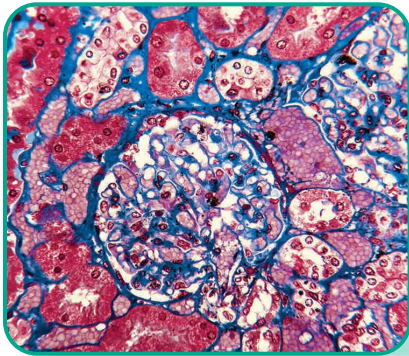
4690A

4690B

VOLUME

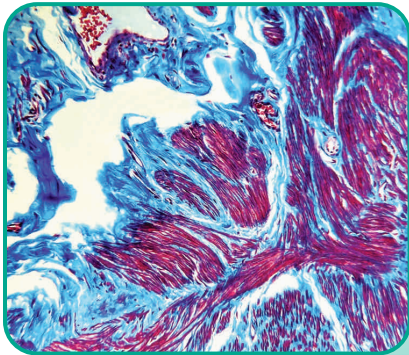
10/set

98/set



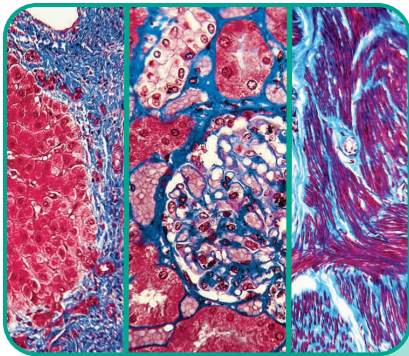
Trichrome, Kidney

TISSUE	PART	VOLUME
(+) Kidney	4691A	10/set
	4691B	98/set



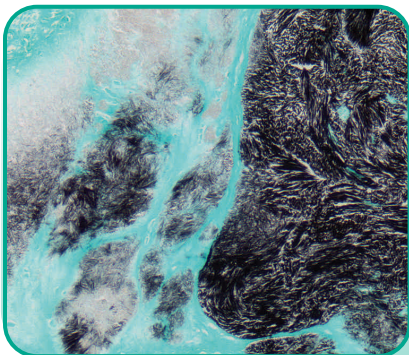
Trichrome, Uterus

TISSUE	PART	VOLUME
(+) Uterus	4695A	10/set
	4695B	98/set



Trichrome, Multi-Tissue

TISSUE	PART	VOLUME
(+) Liver	4693A	10/set
(+) Kidney	4693B	98/set
(+) Uterus		



Urates

TISSUE	PART	VOLUME
(+) Gouty Tophi	4700A	10/set

We have one of the largest selections of both histopathology and immunopathology control slides available. Also, we can accommodate special requests, such as tissue placement and specialty microscope slide glass. Additional charges may apply.

All control slides are on Superfrost® Plus.

All controls are cut in serial sections.

10/set = 10 unstained slides and 1 stained slide.

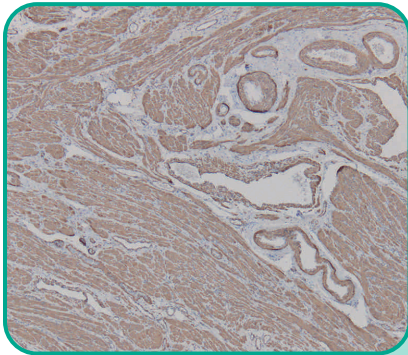
98/set = 98 unstained slides and 2 stained slides.

Please note the following: Allow 2-3 weeks for delivery of large sets. In human tissue unless otherwise indicated. All tissues are Formalin Fixed Paraffin Embedded (FFPE). All slides are air dried. Immunopathology slides are cut at 4 microns, unless otherwise specified. Standard tissue placement is mid-high on slide. Visit our website for the most current control slide

offering. The intended use of these control slides is to qualitatively assess the performance of the immunohistochemical stain. These controls are not intended for quantitative purposes. Review the supplied stained slides with your pathologist prior to using the unstained slides to ensure that the intended analyte of interest is acceptable.

Special Requests

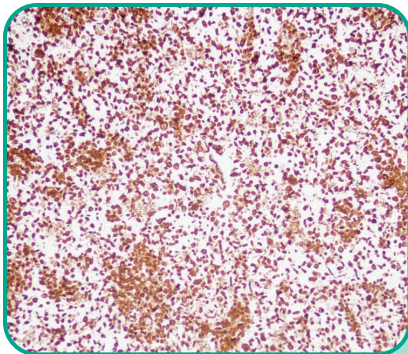
We do offer the ability for our customers to make *special requests* on our immunopathology control slide product line. The most commonly fulfilled *special requests* are changes to the tissue placement, drying method, section thickness, and/or slide glass. When a *special request* has been applied to an order an **SR** is added to the end of the part number. Please see page 3 for more details.



Actin, Smooth Muscle

TISSUE	PART	VOLUME
(+) Uterus	3003A	10/set
	3003B	98/set

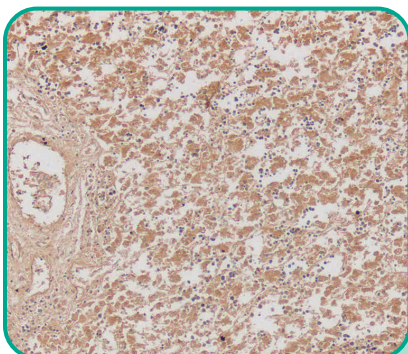
Internal negative control.



ALK-Lymphoma Cell Line

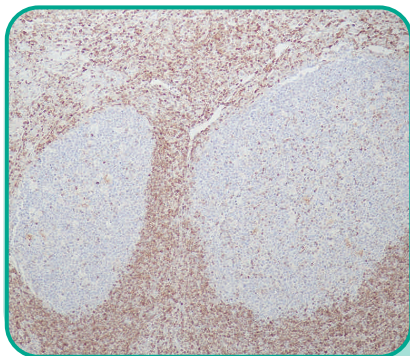
TISSUE	PART	VOLUME
(+) ALK-Lymphoma	3018A	10/set
(-) Breast CA		

For Research Use Only (RUO)



Alpha-Fetoprotein (AFP)

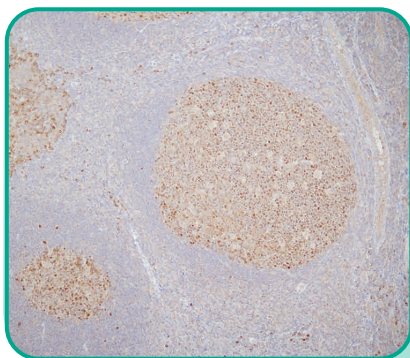
TISSUE	PART	VOLUME
(+) Liver	3055A	10/set
(-) Adipose	3055B	98/set



BCL2

TISSUE
(+) Tonsil

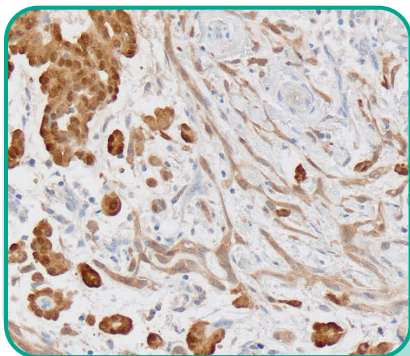
PART	VOLUME
3052A	10/set
3052B	98/set



BCL6

TISSUE
(+) Tonsil

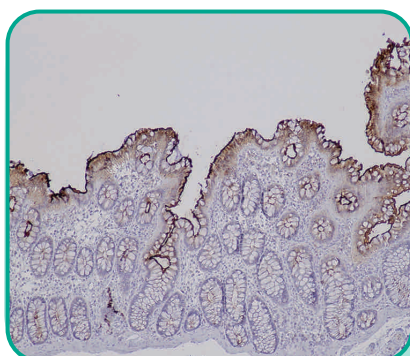
PART	VOLUME
3053A	10/set
3053B	98/set



Calretinin

TISSUE
(+) Mesothelioma
(-) Myometrium

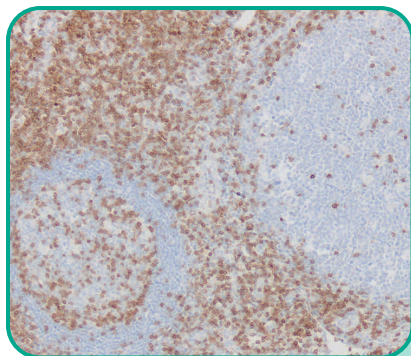
PART	VOLUME
3150A	10/set
3150B	98/set



Carcinoembryonic Antigen (CEA)

TISSUE
(+) Colon
(-) Adipose

PART	VOLUME
3160A	10/set
3160B	98/set

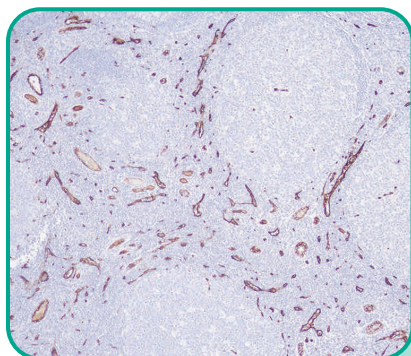


CD3, T-Cell

TISSUE
(+) Tonsil

PART	VOLUME
3770A	10/set
3770B	98/set

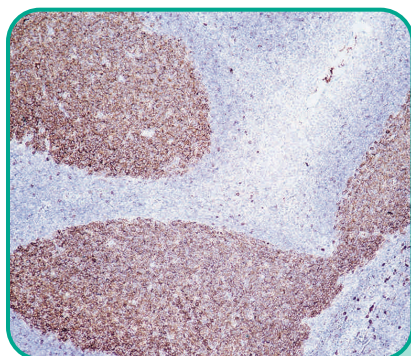
Internal negative control.



CD8

TISSUE
(+) Tonsil
(-) Adipose

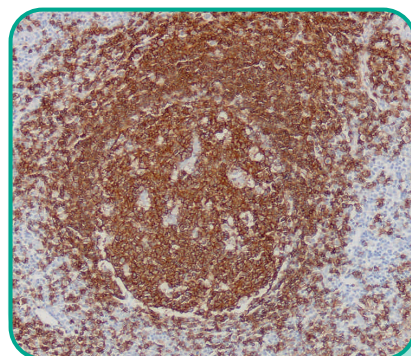
PART	VOLUME
3164A	10/set
3164B	98/set



CD10

TISSUE
(+) Tonsil
(-) Adipose

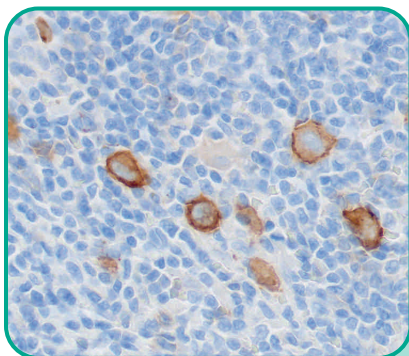
PART	VOLUME
3166A	10/set
3166B	98/set



CD20, B-Cell

TISSUE
(+) Tonsil
(-) Kidney

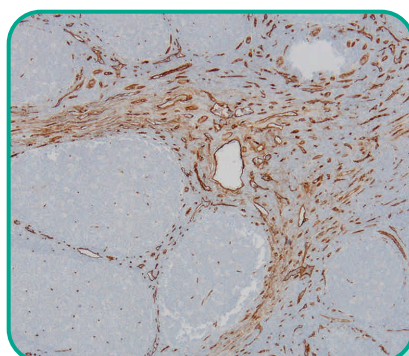
PART	VOLUME
3050A	10/set
3050B	98/set



CD30

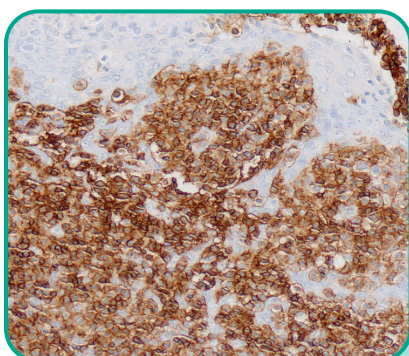
TISSUE	PART	VOLUME
(+) Hodgkin's Lymphoma	3175A	10/set
(-) Kidney	3175B	98/set

Due to the nature of the tissue the standard drying method for CD30 Control Slides are oven dried.



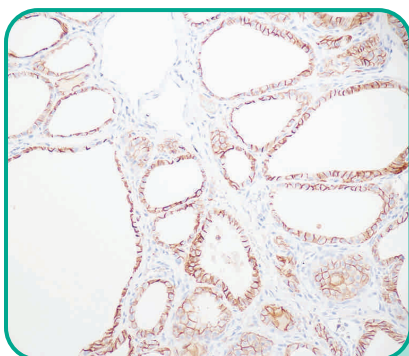
CD34

TISSUE	PART	VOLUME
(+) Tonsil	3176A	10/set
	3176B	98/set



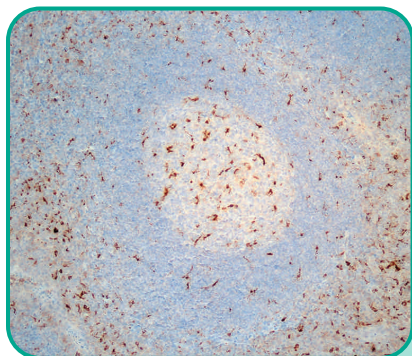
CD45, Leucocyte Common Antigen (LCA)

TISSUE	PART	VOLUME
(+) Tonsil	3545A	10/set
(-) Adipose	3545B	98/set



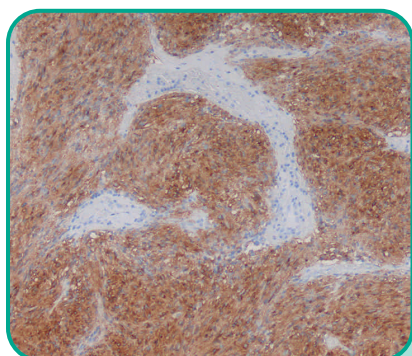
CD56

TISSUE	PART	VOLUME
(+) Thyroid	3184A	10/set
(-) Lung	3184B	98/set



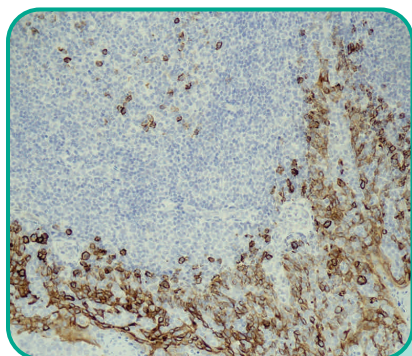
CD68

TISSUE	PART	VOLUME
(+) Tonsil	3185A	10/set
(-) Myometrium	3185B	98/set



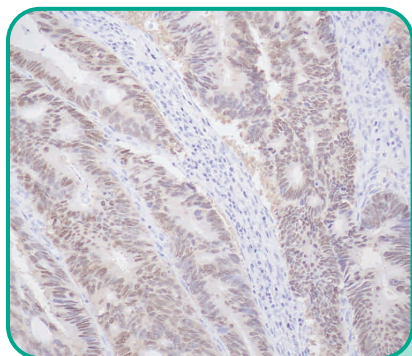
CD117, c-Kit

TISSUE	PART	VOLUME
(+) GIST	3170A	10/set
(-) Adipose	3170B	98/set



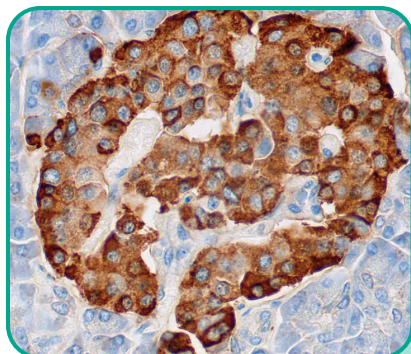
CD138

TISSUE	PART	VOLUME
(+) Tonsil	3188A	10/set
(-) Adipose	3188B	98/set



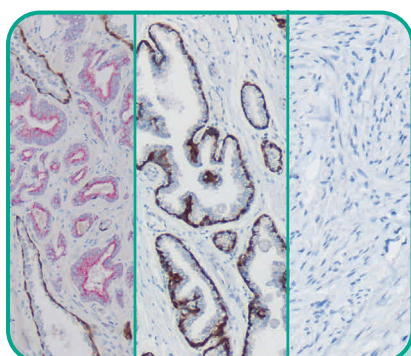
CDX2

TISSUE	PART	VOLUME
(+) Colon	3189A	10/set
(-) Myometrium	3189B	98/set



Chromogranin A

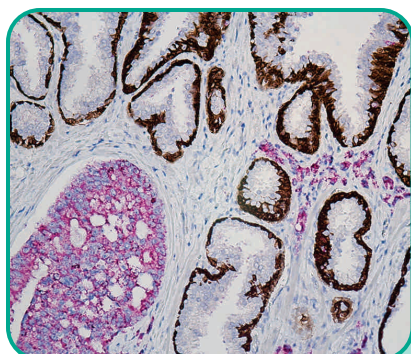
TISSUE	PART	VOLUME
(+) Pancreas	3190A	10/set
(-) Kidney	3190B	98/set



CK5/14 + p63 + P504S, Multi-Tissue

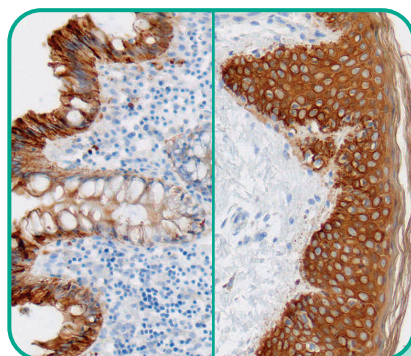
TISSUE	PART	VOLUME
(+) P504S Prostate	3650A	10/set
(+) CK5/14, p63 Prostate	3650B	98/set
(-) Myometrium		

(Formerly known as PIN-4 Cocktail Multi-Tissue Control Slide.)



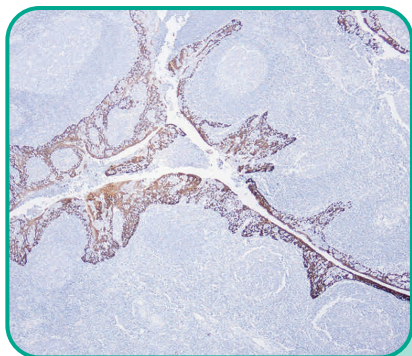
CK5/14 + p63 + P504S

TISSUE	PART	VOLUME
(+) CK5/14	3651A	10/set
(+) p63, (+) P504S Prostate	3651B	98/set
(-) Myometrium		



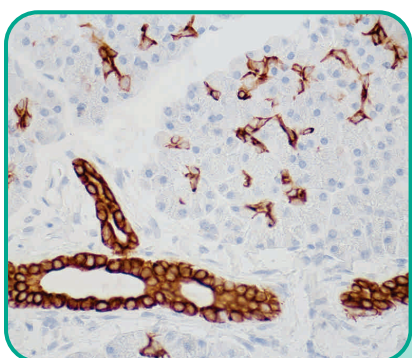
Cytokeratin AE1/AE3

TISSUE	PART	VOLUME
(+) Skin	3235A	10/set
(+) Colon	3235B	98/set
(-) Myometrium		



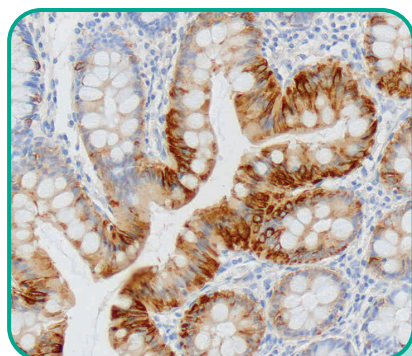
Cytokeratin 5/6 (CK5/6)

TISSUE	PART	VOLUME
(+) Tonsil	3230A	10/set
(-) Liver	3230B	98/set



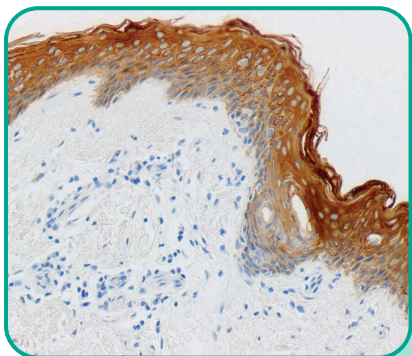
Cytokeratin 7 (CK7)

TISSUE	PART	VOLUME
(+) Pancreas	3232A	10/set
(-) Myometrium	3232B	98/set



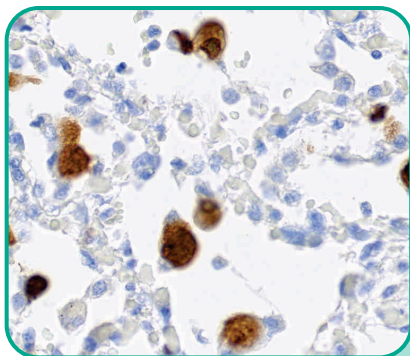
Cytokeratin 20 (CK20)

TISSUE	PART	VOLUME
(+) Colon	3233A	10/set
(-) Myometrium	3233B	98/set



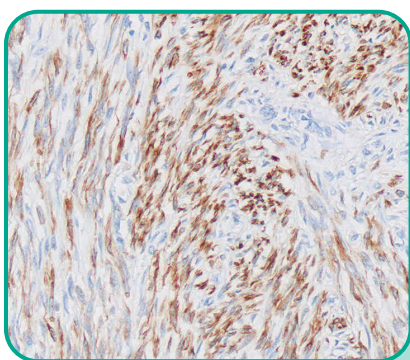
Cytokeratin, HMW

TISSUE	PART	VOLUME
(+) Skin	3237A	10/set
(-) Myometrium	3237B	98/set



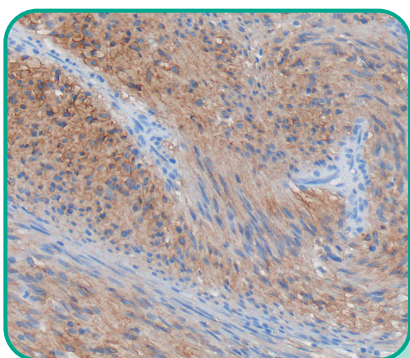
Cytomegalovirus (CMV)

TISSUE	PART	VOLUME
(+) Lung	3240A	10/set
(-) Myometrium	3240B	98/set



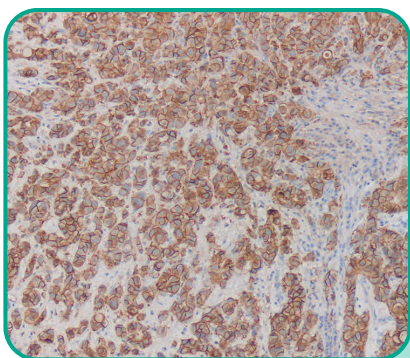
Desmin

TISSUE	PART	VOLUME
(+) Leiomyoma Uterus	3255A	10/set
(-) Tonsil	3255B	98/set



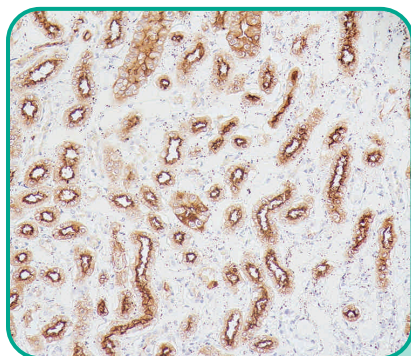
DOG1

TISSUE	PART	VOLUME
(+) GIST	3257A	10/set
(-) Kidney	3257B	98/set



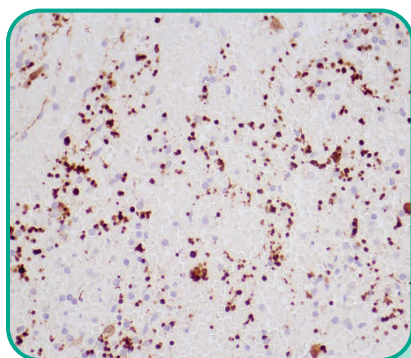
E-cadherin

TISSUE	PART	VOLUME
(+) Liver	3283A	10/set
(-) Myometrium	3283B	98/set



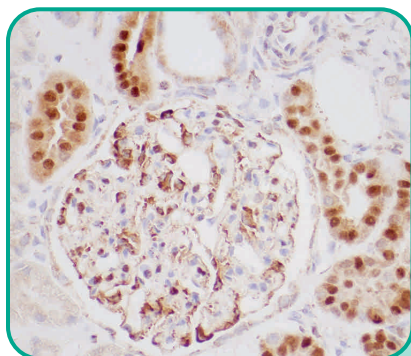
Epithelial Membrane Antigen (EMA)

TISSUE	PART	VOLUME
(+) Kidney	3285A	10/set
(-) Thyroid	3285B	98/set



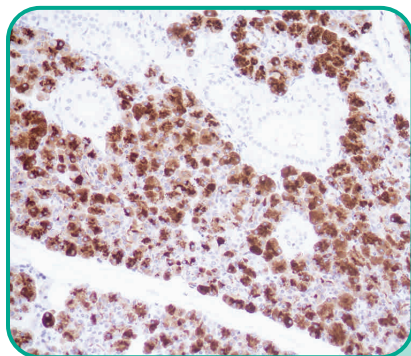
Factor XIIIa

TISSUE	PART	VOLUME
(+) Spleen	3300A	10/set
	3300B	98/set



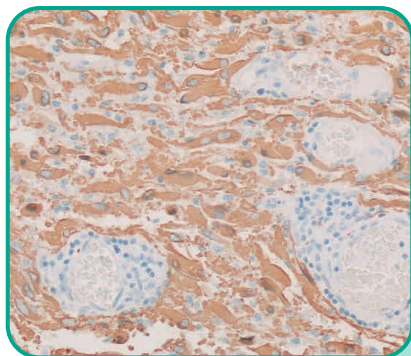
GATA3

TISSUE	PART	VOLUME
(+) Kidney	3265A	10/set
(-) Adipose	3265B	98/set



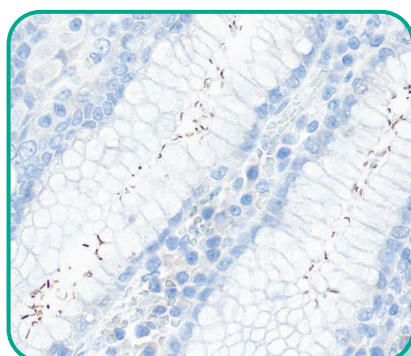
GCDPF-15

TISSUE	PART	VOLUME
(+) Submandibular Gland	3310A	10/set
(-) Myometrium	3310B	98/set



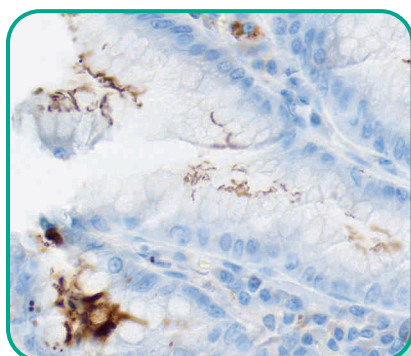
Glial Fibrillary Acidic Protein (GFAP)

TISSUE	PART	VOLUME
(+) Brain	3320A	10/set
(-) Myometrium	3320B	98/set



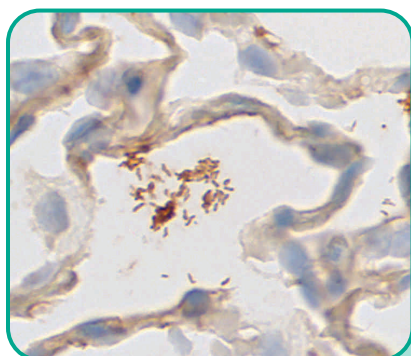
Helicobacter

TISSUE	PART	VOLUME
(+) GI Tract	3276A	10/set
(-) Lung	3276B	98/set



Helicobacter, Animal

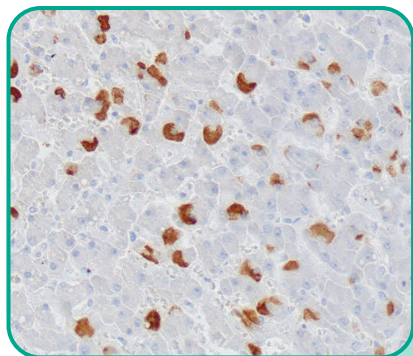
TISSUE	PART	VOLUME
(+) GI Tract, Animal	3274A	10/set
(-) Lung	3274B	98/set



Helicobacter, Artificial

TISSUE	PART	VOLUME
(+) Rat Lung	3270A	10/set
(-) Lung	3270B	98/set

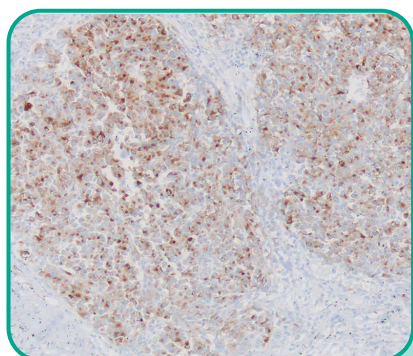
Organisms artificially introduced into a rat organ through a non-infectious process.



Hepatitis B Surface Antigen (HBsAG)

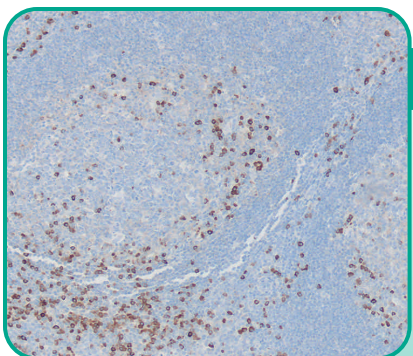
TISSUE	PART	VOLUME
(+) Liver	3365A	10/set
(-) Kidney		

Due to the nature of the tissue the standard drying method for Hepatitis B Surface Antigen Control Slides are oven dried.



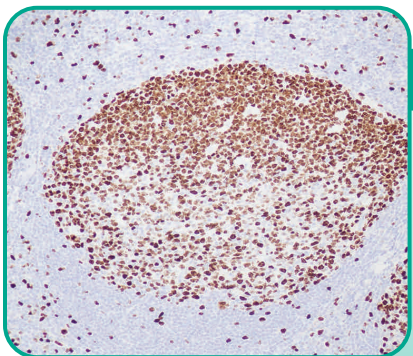
HMB-45

TISSUE	PART	VOLUME
(+) Melanoma	3370A	10/set
(-) Lung	3370B	98/set



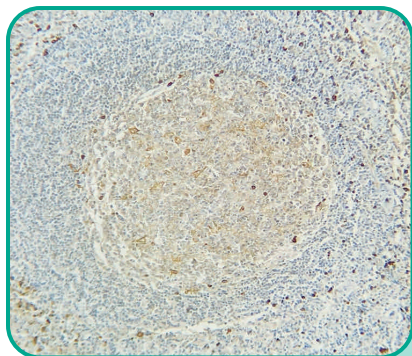
Kappa

TISSUE	PART	VOLUME
(+) Tonsil	3480A	10/set
	3480B	98/set



Ki-67

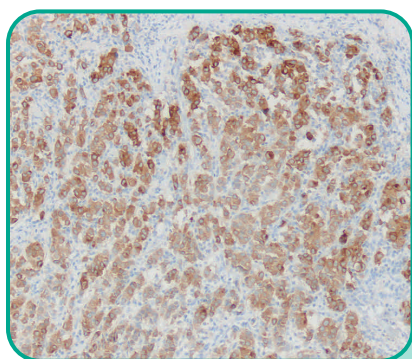
TISSUE	PART	VOLUME
(+) Tonsil	3485A	10/set
(-) Adipose	3485B	98/set



Lambda

TISSUE
(+) Tonsil

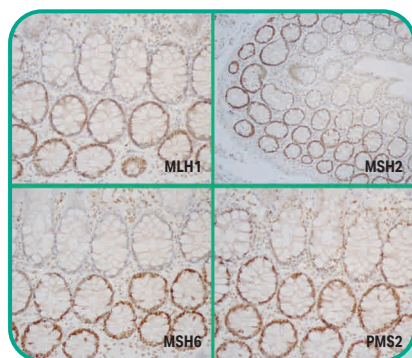
PART	VOLUME
3530A	10/set
3530B	98/set



Melan-A (MART-1)

TISSUE
(+) Melanoma
(-) Lung

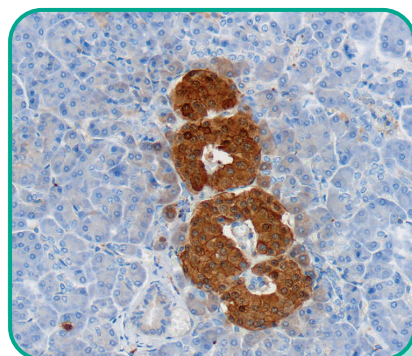
PART	VOLUME
3580A	10/set
3580B	98/set



Mismatch Repair (MMR) Positive

TISSUE
(+) Normal Colon

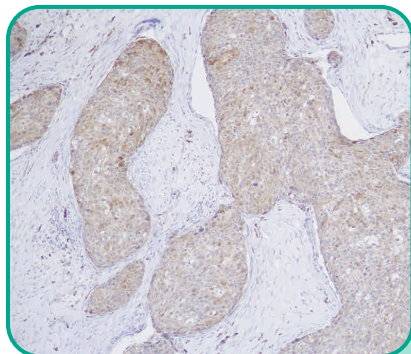
PART	VOLUME
3590B	98/set



Neuron-Specific Enolase (NSE)

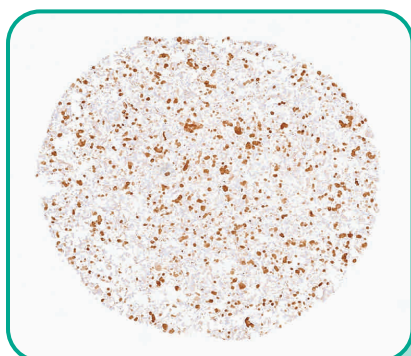
TISSUE
(+) Pancreas
(-) Adipose

PART	VOLUME
3611A	10/set
3611B	98/set



p16

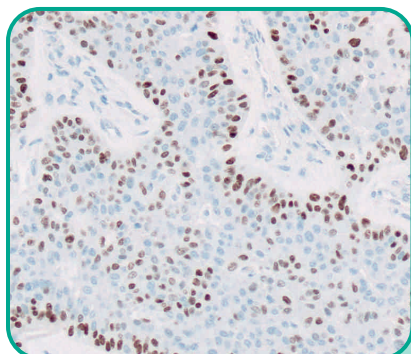
TISSUE	PART	VOLUME
(+) Breast	3625A	10/set
(-) Adipose	3625B	98/set



p16 Cell Line

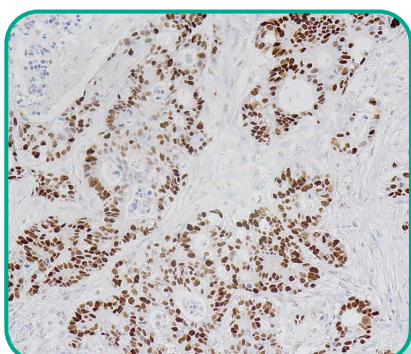
TISSUE	PART	VOLUME
(+) Cervical Adeno CA	3627A	10/set
(+) Epidermoid CA		
(-) Breast Adeno CA		

For Research Use Only (RUO)



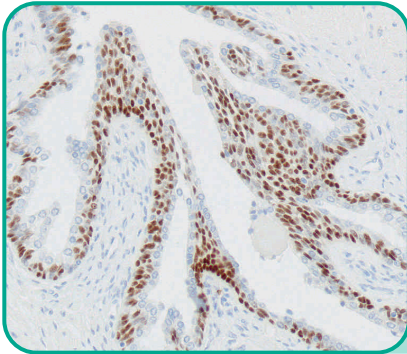
p40

TISSUE	PART	VOLUME
(+) Lung	3635A	10/set
(-) Kidney	3635B	98/set



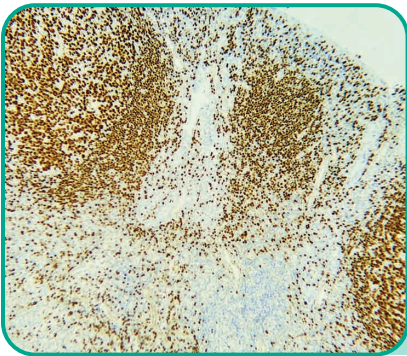
p53

TISSUE	PART	VOLUME
(+) Colon	3640A	10/set
(-) Adipose	3640B	98/set



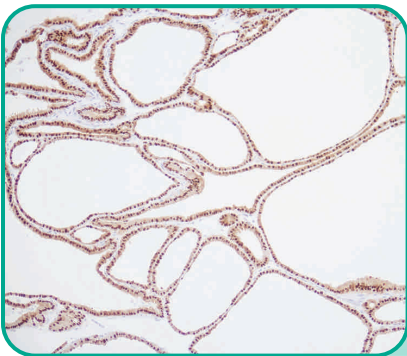
p63

TISSUE	PART	VOLUME
(+) Benign Prostate	3641A	10/set
(-) Myometrium	3641B	98/set



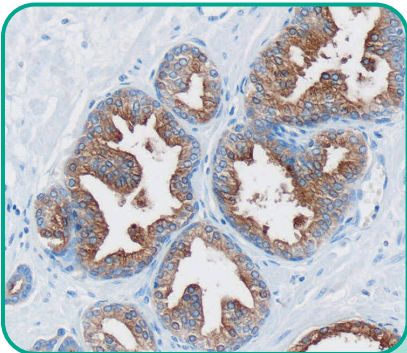
PAX5

TISSUE	PART	VOLUME
(+) Tonsil	3659A	10/set
(-) Adipose	3659B	98/set



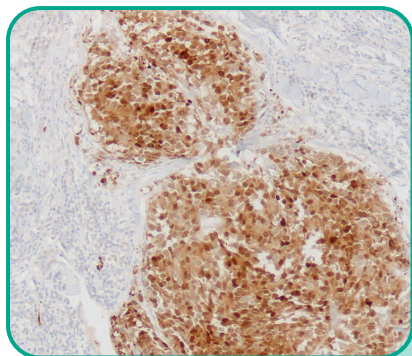
PAX8

TISSUE	PART	VOLUME
(+) Thyroid	3662A	10/set
(-) Myometrium	3662B	98/set



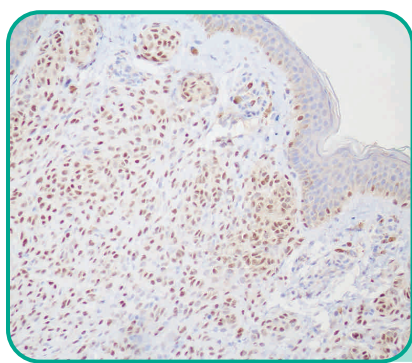
Prostate Specific Antigen (PSA)

TISSUE	PART	VOLUME
(+) Prostate	3681A	10/set
(-) Lung	3681B	98/set



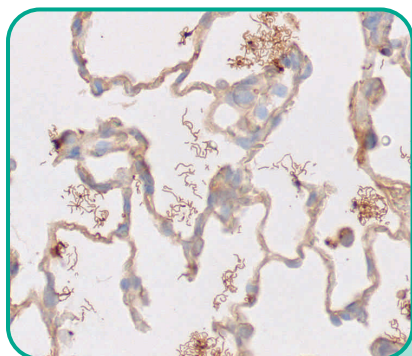
S-100

TISSUE	PART	VOLUME
(+) Melanoma	3740A	10/set
(-) Lung	3740B	98/set



SOX-10

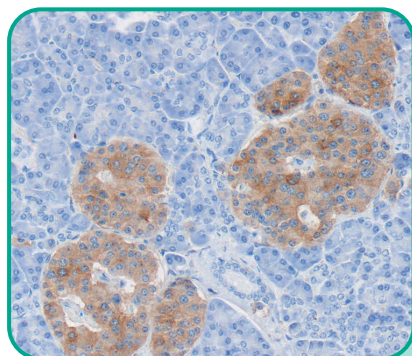
TISSUE	PART	VOLUME
(+) Organ	3743A	10/set
(-) Myometrium	3743B	98/set



Spirochete Treponema, Artificial

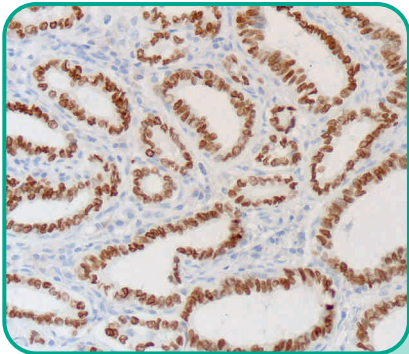
TISSUE	PART	VOLUME
(+) Rat Lung	3746A	10/set
(-) Lung	3746B	98/set

Organisms artificially introduced into a rat organ through a non-infectious process.



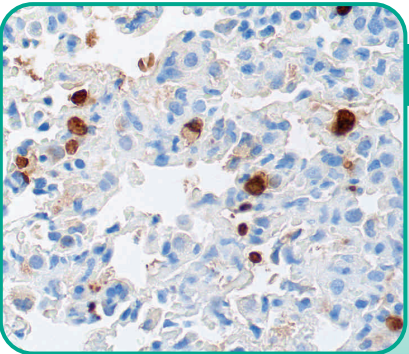
Synaptophysin

TISSUE	PART	VOLUME
(+) Pancreas	3750A	10/set
(-) Kidney	3750B	98/set



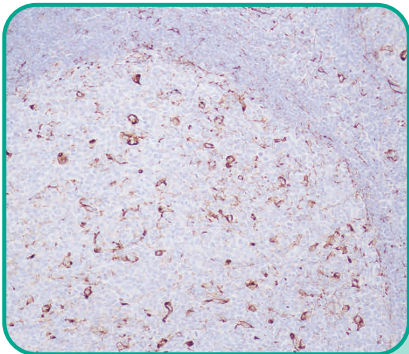
Thyroid Transcription Factor (TTF-1)

TISSUE	PART	VOLUME
(+) Thyroid	3780A	10/set
(-) Myometrium	3780B	98/set



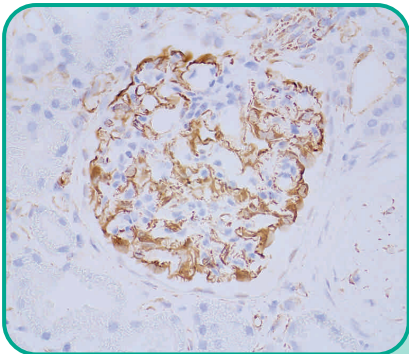
Toxoplasma, Animal

TISSUE	PART	VOLUME
(+) Rat Organ	3801A	10/set
(-) Myometrium	3801B	98/set



Vimentin

TISSUE	PART	VOLUME
(+) Tonsil	3870A	10/set
(-) Adipose	3870B	98/set



Wilms' Tumor (WT1)

TISSUE	PART	VOLUME
(+) Kidney	3900A	10/set
(-) Lung	3900B	98/set



"There are two ways to live your life. One is as though nothing is a miracle. The other is as though everything is a miracle." -Albert Einstein





1020 Prairie View Ct • Waunakee, WI 53597-8512 • 800-383-7799

www.newcomersupply.com