

## Breast Analyte Control



### PRODUCT INFORMATION

- For Research Use Only
- 2 Cores: 1 negative core, 1 core showing positive expression for ER, PR, and HER2

### PRODUCT OPTIONS

- Part HCL013 2 slides
- Part HCL014 5 slides
- Part HCL015 1 block

HistoCyte Laboratories' Breast Analyte Control is a qualitative control containing two cell lines that demonstrate positive and negative expression of ER, PR, and HER2. This cost-effective multipurpose breast control is ideal for use as a same slide control to indicate whether reagents have been correctly applied to the slide. These cell lines are derived from the following tumors:

Cell line A: Osteosarcoma

Cell line B: Breast ductal carcinoma

1. Cells are fixed in 10% neutral buffered formalin and paraffin wax embedded.
2. Sections are cut at 4µm, mounted on positively charged slides and dried overnight at 37°C.
3. Cell microarray (CMA) cores are 1.5-2mm in diameter and 3-3.5mm in length. It is possible to obtain over 300 sections depending on thickness.

Distributed by:

**NEWCOMER SUPPLY**

800-383-7799  
info@newcomersupply.com

2505 Parview Road  
Middleton, WI 53562-2579

**HistoCyte**  
laboratories



# Cell Line Controls

## Research Use Only (RUO)

HistoCyte Laboratories Ltd uses proprietary methods to process cell lines into tissue-like controls for laboratories challenged to find suitable control tissue including low and intermediate expressing biomarkers.

The cell line controls are standardized to provide consistent and reliable morphology, resulting in dependable staining throughout the block, and providing each laboratory with the confidence of repeatable expression. These products also have the advantage of being manufactured to a reproducible standard and with an inexhaustible supply.



## PRODUCT ADVANTAGES

- Ideal for IHC and ISH
- Can obtain 300 sections from a block
- Saves time and resources
- Provides staining confidence

## PRODUCT INFORMATION

- 2 slides – 4µm sections on charged slides and dried overnight at 37°C
- 5 slides – 4µm sections on charged slides and dried overnight at 37°C
- Block – Cell microarrays (CMA) containing cores 1.5-2mm in diameter and 3-3.5mm in length

**Fixation:** 10% neutral buffered formalin

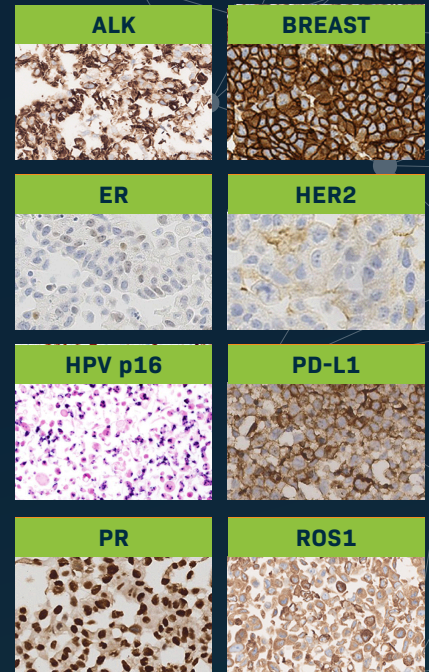
**Storage:** 2-8°C. Do not freeze.

Distributed by:



## Dynamic Range Controls

Full Range of Expression



## Standard Controls

Positive & Negative Expression

