

## p16 Cell Line Control Slides – Technical Memo

**CONTROL SLIDES:** Part 3627A  
10 Slide/Set

**PRODUCT SPECIFICATIONS:**

**Cell Line:** Two positive staining cores and one negative staining core from HistoCyte Cell Microarray HCL006

**Fixation:** Formalin 10%, Phosphate Buffered.

**Section/Glass:** Paraffin sections cut at 4 microns on Superfrost™ Plus slides.

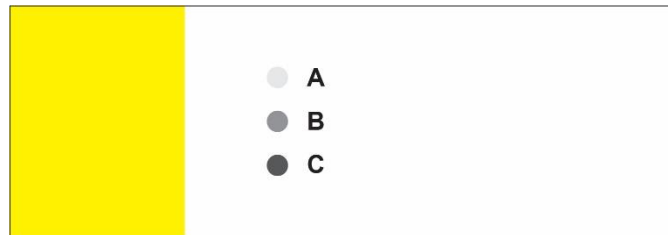
**Storage:** 2-8°C in a light deprived and humidity controlled environment.

**Expiration:** Refer to individual product label.

**Intended Use:** *Research Use Only (RUO).*

**PRODUCT DESCRIPTION:**

The enclosed cell line control slides are developed from a process that allows production of compact cell preparations, cultured from human cell lines, that retain their cellular morphology and are tissue-like in composition. These cell lines are standardized and manufactured to provide consistent results from slide to slide. Each slide contains three, 1.5-2mm diameter cell line cores which demonstrate positive and negative expressions for the specific marker.



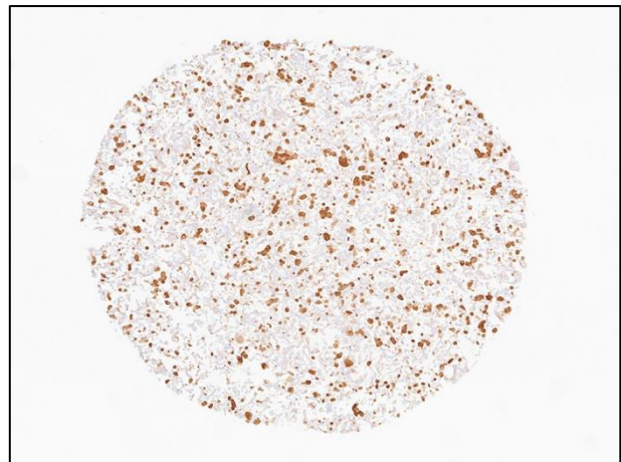
A = Breast adenocarcinoma (negative p16 expression)  
B = Cervical adenocarcinoma (positive p16 expression)  
C = Epidermoid carcinoma (positive p16 expression)

**APPLICATION:**

Newcomer Supply p16 Cell Line Control Slides are appropriate for use in immunohistochemistry (IHC) and in situ hybridization (ISH). The slides may be used to check for reagent performance and troubleshooting of HPV ISH and p16 IHC staining. p16 can serve as a surrogate marker for high-risk HPV in cases of cervical, head and neck and a variety of HPV related carcinomas. It is the responsibility of the end user to determine suitability with their reagents and procedures within their laboratory.



B = Cervical adenocarcinoma (positive p16 expression)



C = Epidermoid carcinoma (positive p16 expression)