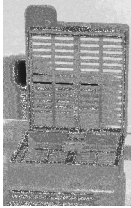




Our Tissue Cassette Pricing is worth Running to Get!

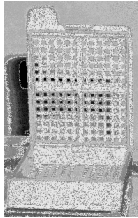


High Quality and LOW Prices! We know what you want...and what you NEED!
 (But, you really don't have to run to get 'em, they're our everyday price)



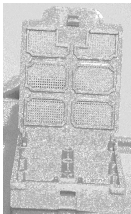
Processing & Embedding Cassettes:

	<u>Volume</u>	<u>Color</u>	<u>Order#</u>	<u>Pricing</u>
→ Slotted Lid & Base	500/bx	Blue	5115B	\$42.50
→ Anterior Edge 45° Angle	500/bx	Gray	5115GY	\$42.50
	500/bx	Green	5115G	\$42.50
→ Covers Detached	500/bx	Lilac	5115L	\$42.50
	500/bx	Orange	5115O	\$42.50
	500/bx	Pink	5115P	\$42.50
	500/bx	Tan	5115T	\$42.50
	500/bx	White	5115W	\$42.50
	500/bx	Yellow	5115Y	\$42.50



Biopsy Cassettes:

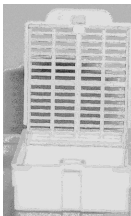
	<u>Volume</u>	<u>Color</u>	<u>Order#</u>	<u>Pricing</u>
→ 1mm Square Openings	500/bx	Blue	5116B	\$42.50
	500/bx	White	5116W	\$42.50
→ Anterior Edge 45° Angle	500/bx	Green	5116G	\$42.50
	500/bx	Yellow	5116Y	\$42.50
→ Covers Detached				



Microsette & Micromesh 1, 4 & 6 Compartmentalized Biopsy Cassettes:

	<u>Volume</u>	<u># of Compartments</u>	<u>Order#</u>	<u>Pricing</u>
→ No Biopsy Bag Needed	250/bx	Single <small>(white only)</small>	5120W	\$72.00
→ Excellent Fluid Exchange	250/bx	Four *	5119	\$72.00
	250/bx	Six *	5117	\$72.00
→ Hinged Lids				

*Available in White, Pink, Green, Yellow & Blue



Macrosette Cassettes:

	<u>Volume</u>	<u>Color</u>	<u>Order#</u>	<u>Pricing</u>
→ 10mm Deep				
→ Designed for Large Tissue	250/bx	White	5118W	\$67.00
→ Covers Attached				

If you don't see the cassette you're looking for, GIVE US A CALL, we can help!



800-383-7799

Distributed By:



2505 Parview Road, Middleton, WI 53562 (800) 383 • 7799 (608) 831 • 7888 FAX (608) 831 • 0866 • www.newcomersupply.com